

Turanganui a Kiwa

Historical Overview Maps

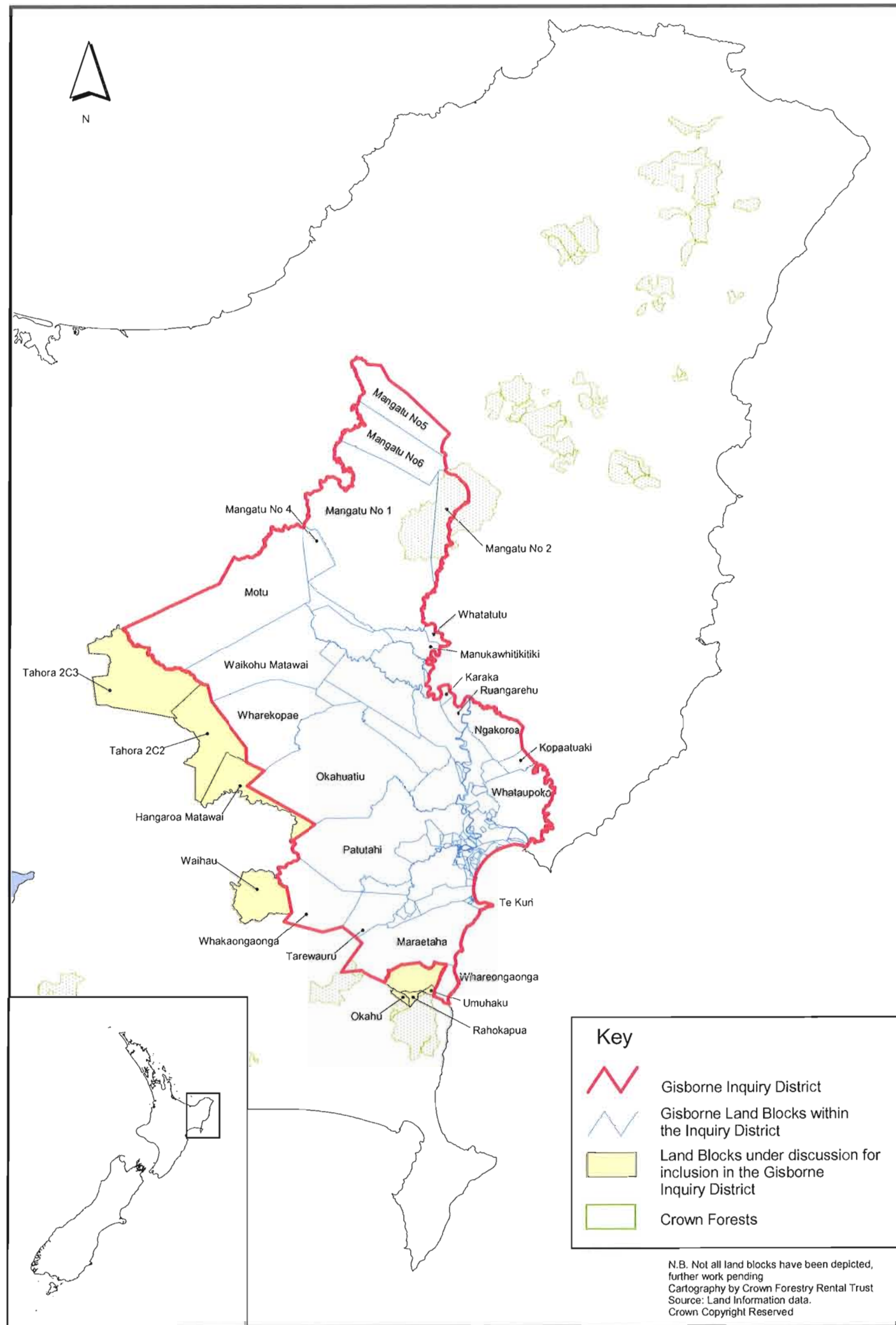
Part 2

Moka Apiti
Crown Forestry Rental Trust
March 2001

Table of Contents

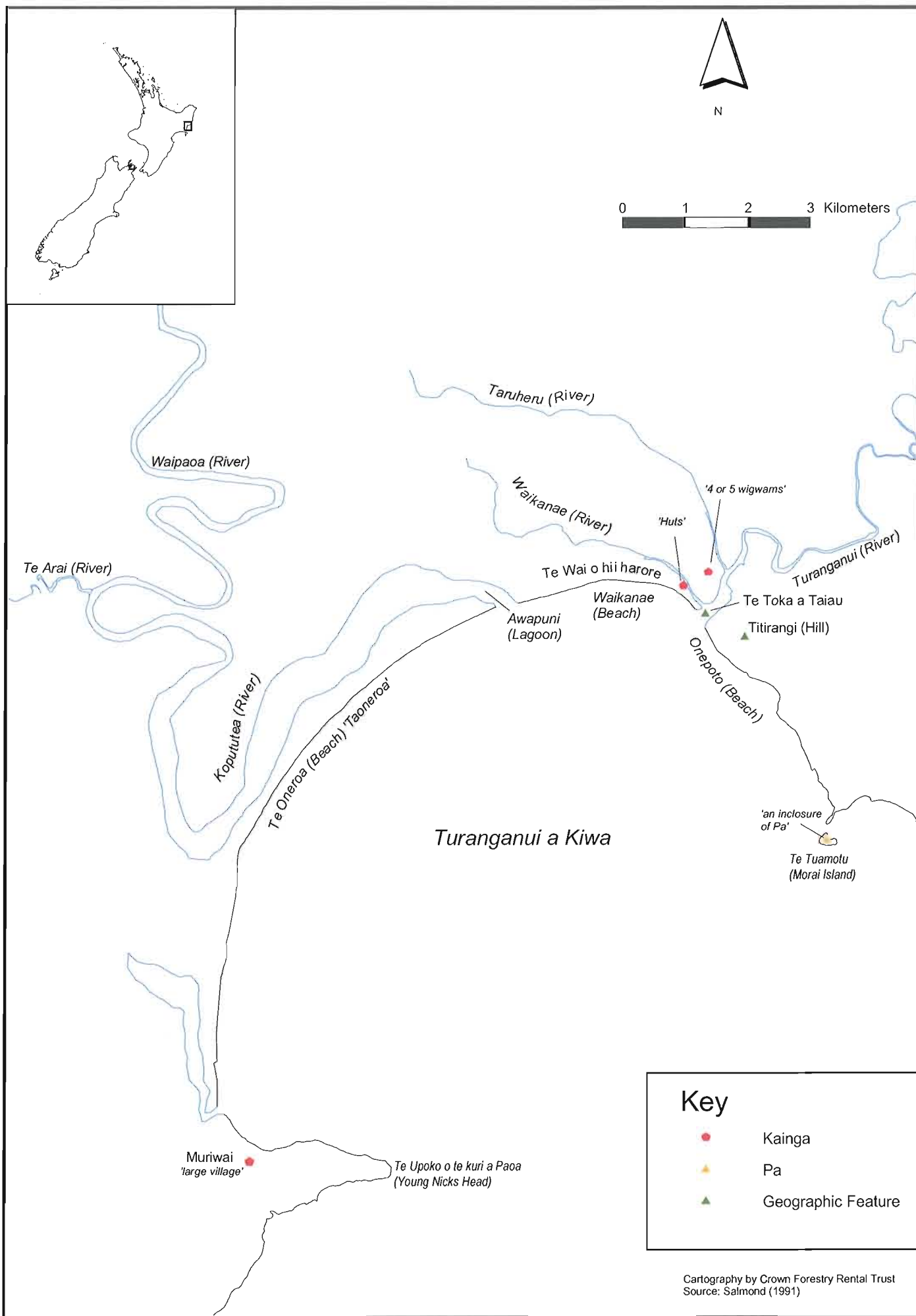
- Map 1. ***Gisborne Inquiry District***
- Map 2. ***Turanganui in 1769***
- Map 3. ***Old Land Claims Granted by the Poverty Bay Commission
1869***
- Map 4. ***Sketch Map of the Land Conceded to the Crown by the
Native Owners 1868***
- Map 5. ***Land Conceded to the Crown by the Native Owners 1868***
- Map 6. ***Land Conceded to the Crown by the Native Owners 1868***
- Map 7. ***Crown Grants Under the Poverty Bay Commission***
- Map 8. ***Crown Grants 1871 to 1889***
- Map 9. ***Read's Land Purchases in Turanganui a Kiwa by 1878***

Bibliography



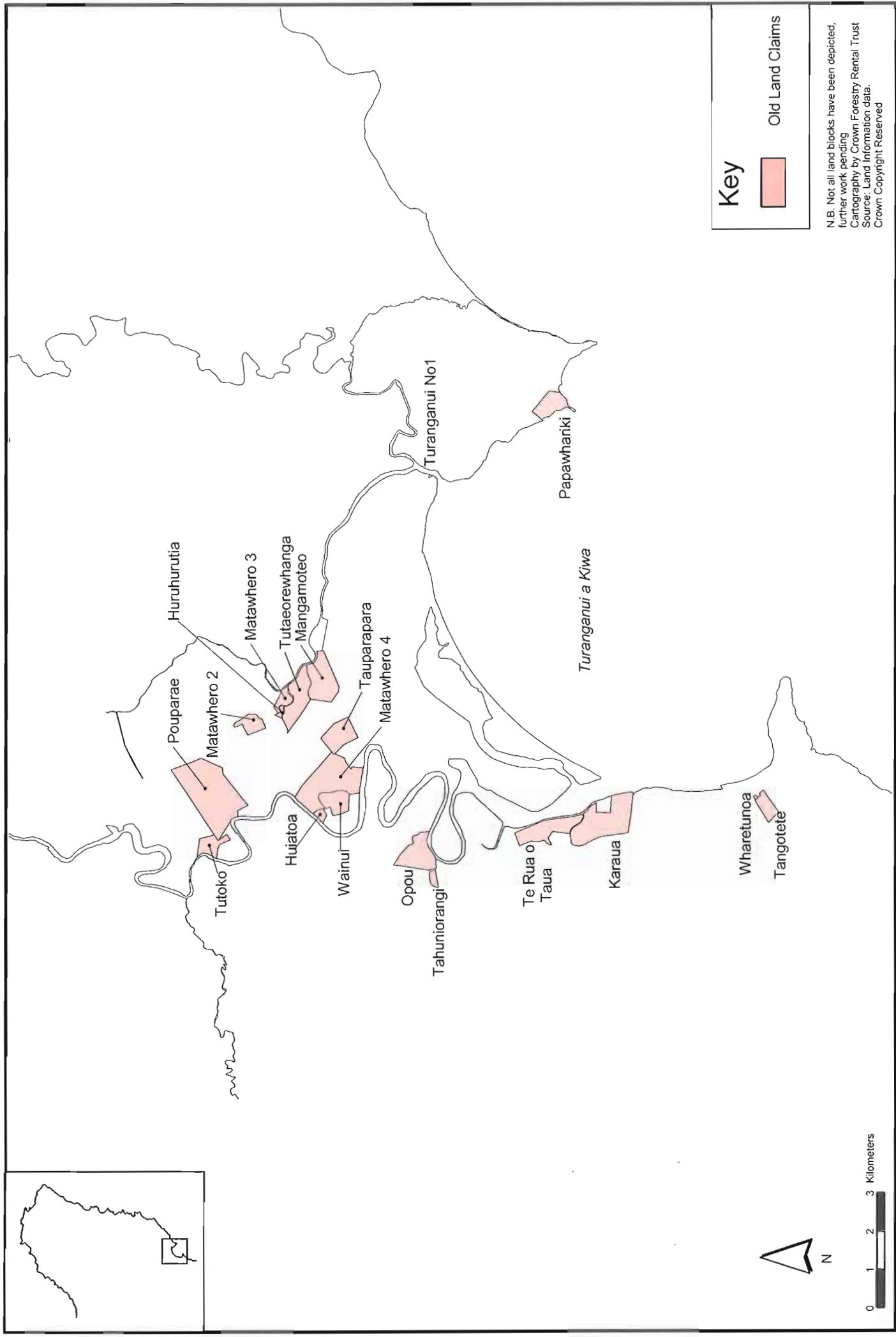
Map 1 Gisborne Inquiry District





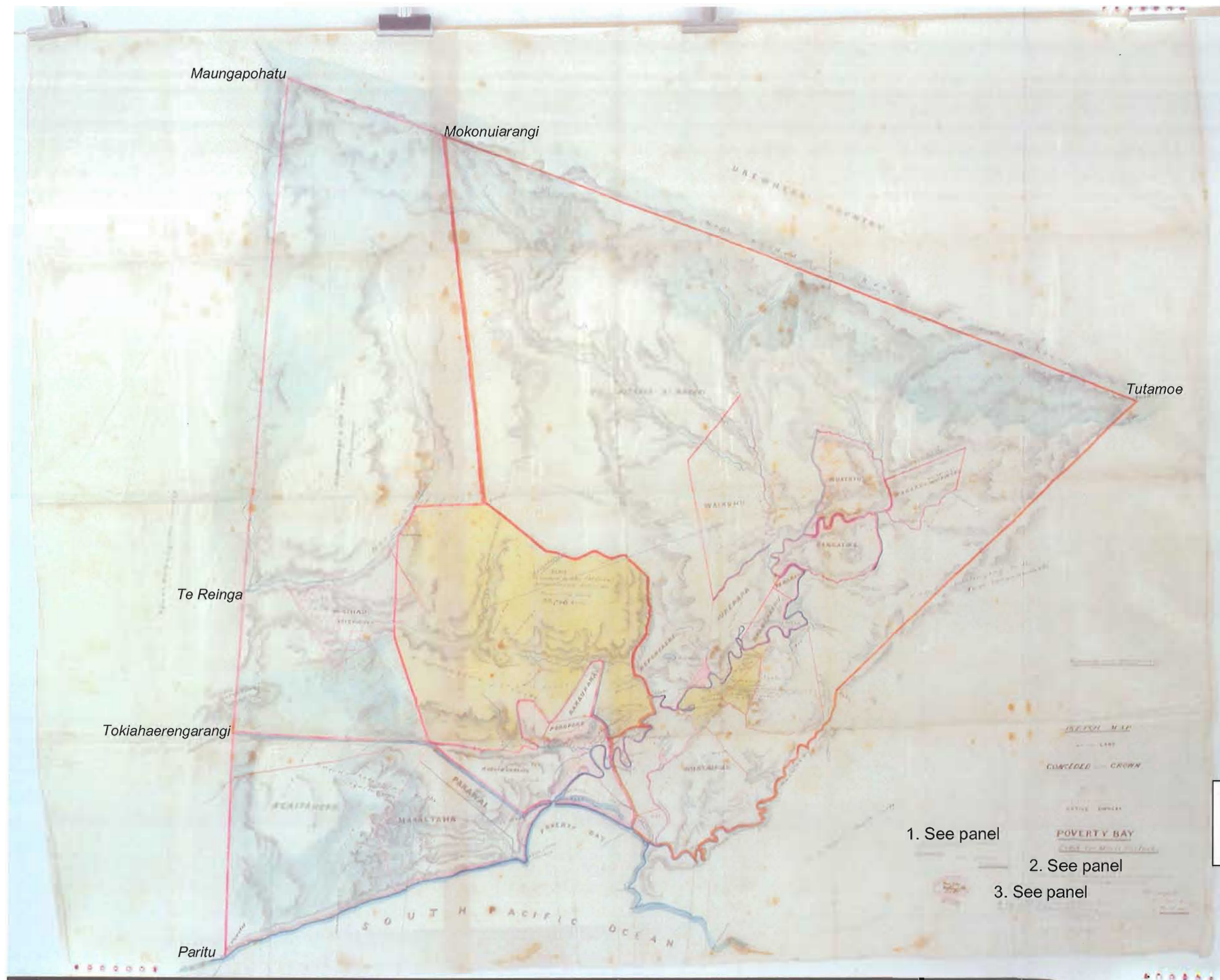
Map 2 Turanganui in 1769





Map 3 Old Land Claims Granted by the Poverty Bay Commission 1869





1.

Produced before the Court held at Turanganui
Signed HMonro
Commissioner

2.

Note The position of Maungapohatu is not accurately known but it cannot be far off the place shown.
Signed
OLW Bousfield
Genl Govt Surveyor
April 1869

3.

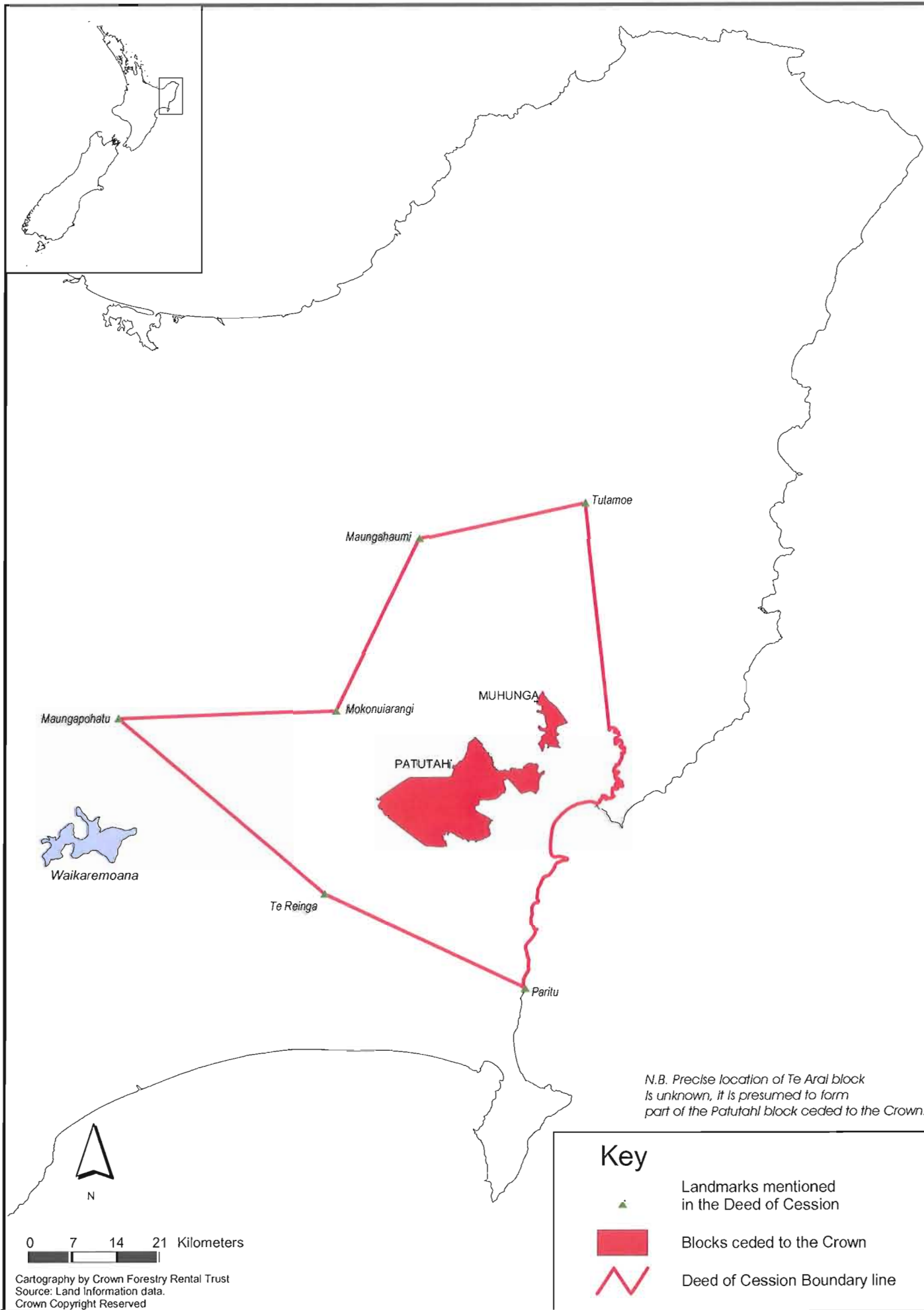
A copy of the map in the survey office Auckland New Zealand
JH Burslem Draftsman
8 December 1879

1. See panel

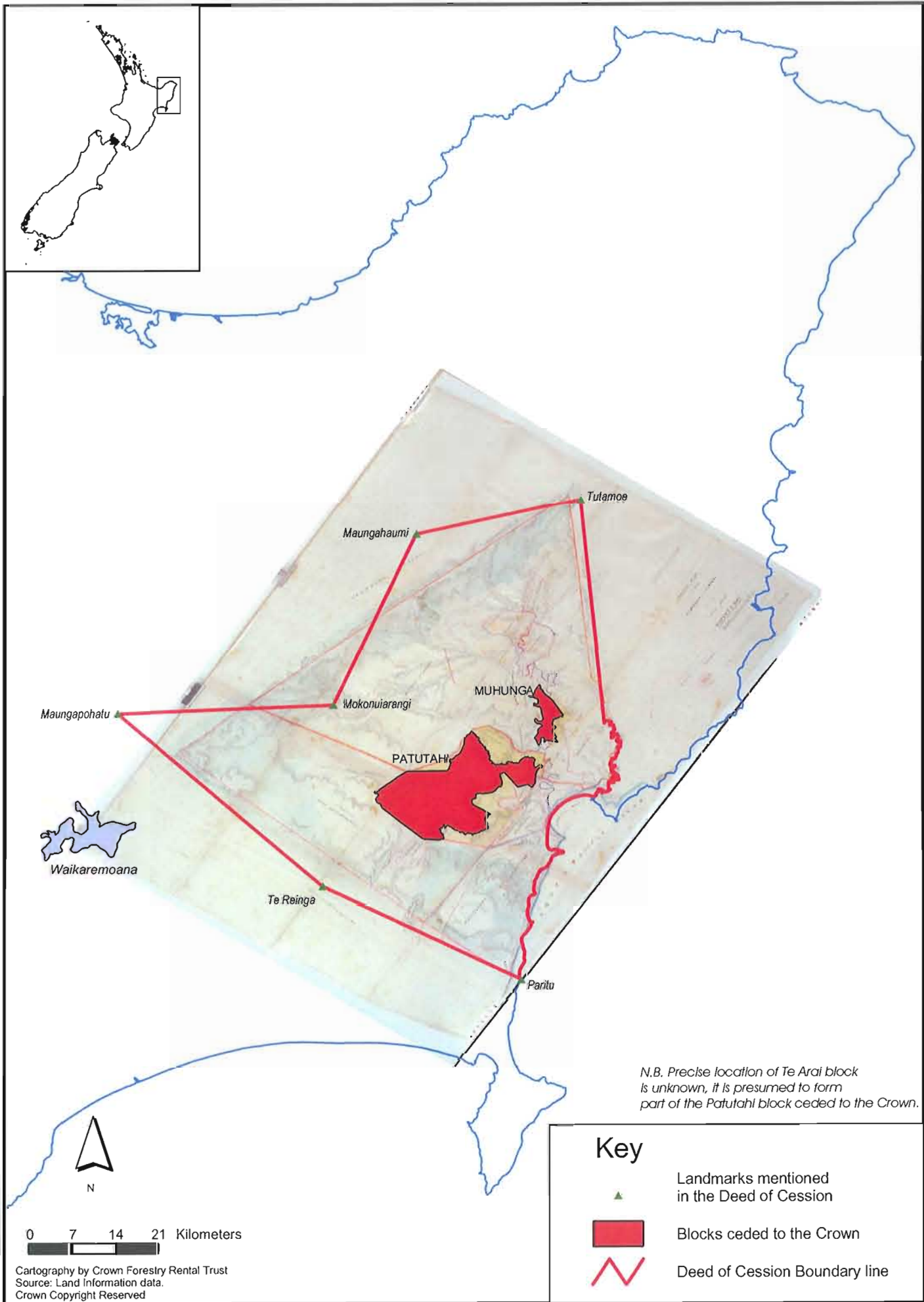
2. See panel

3. See panel

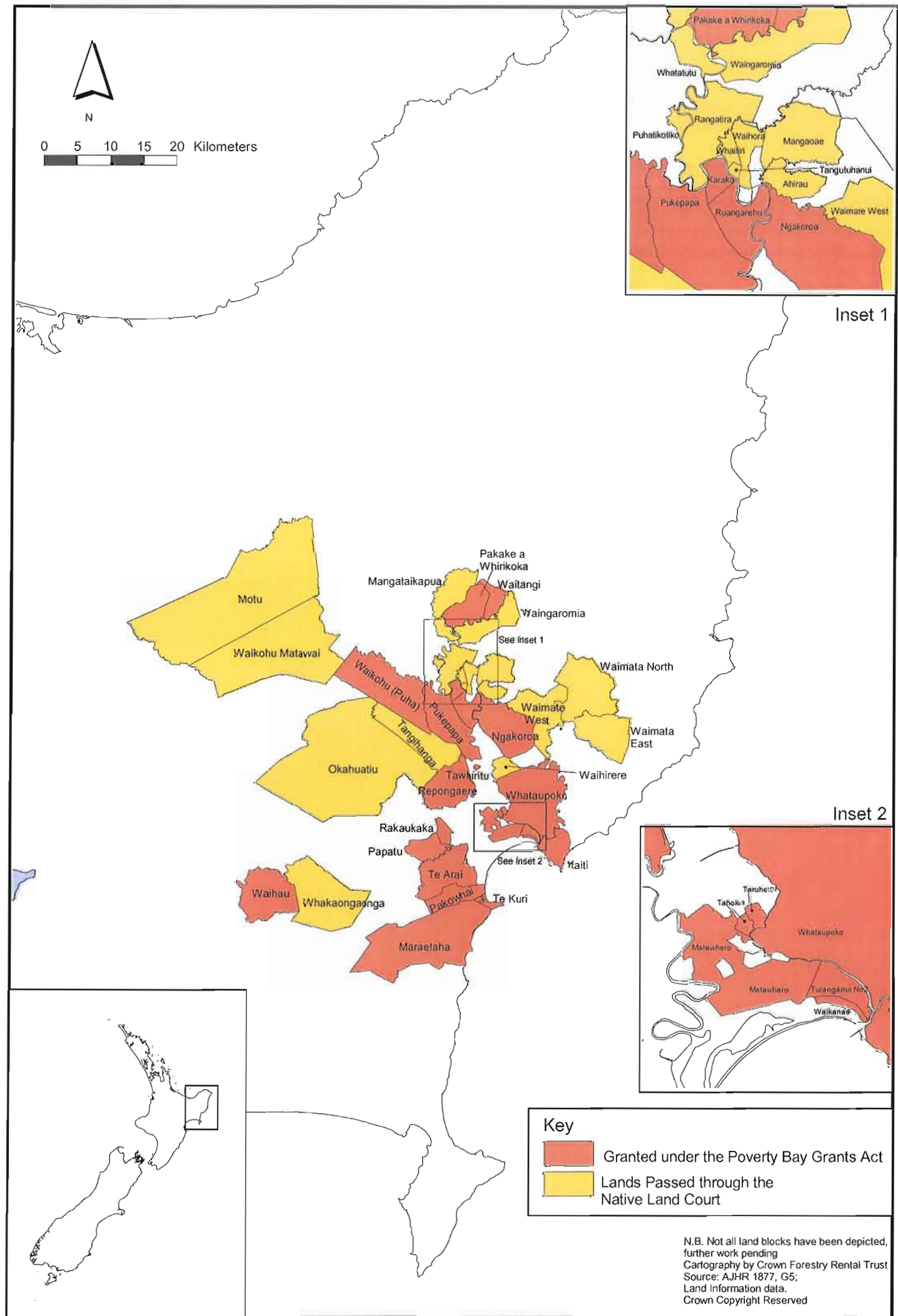
Map 4 Sketch Map of the Land Conceded to the Crown by the Native Owners



Map 5 Land Conceded to the Crown by the Native Owners 1868

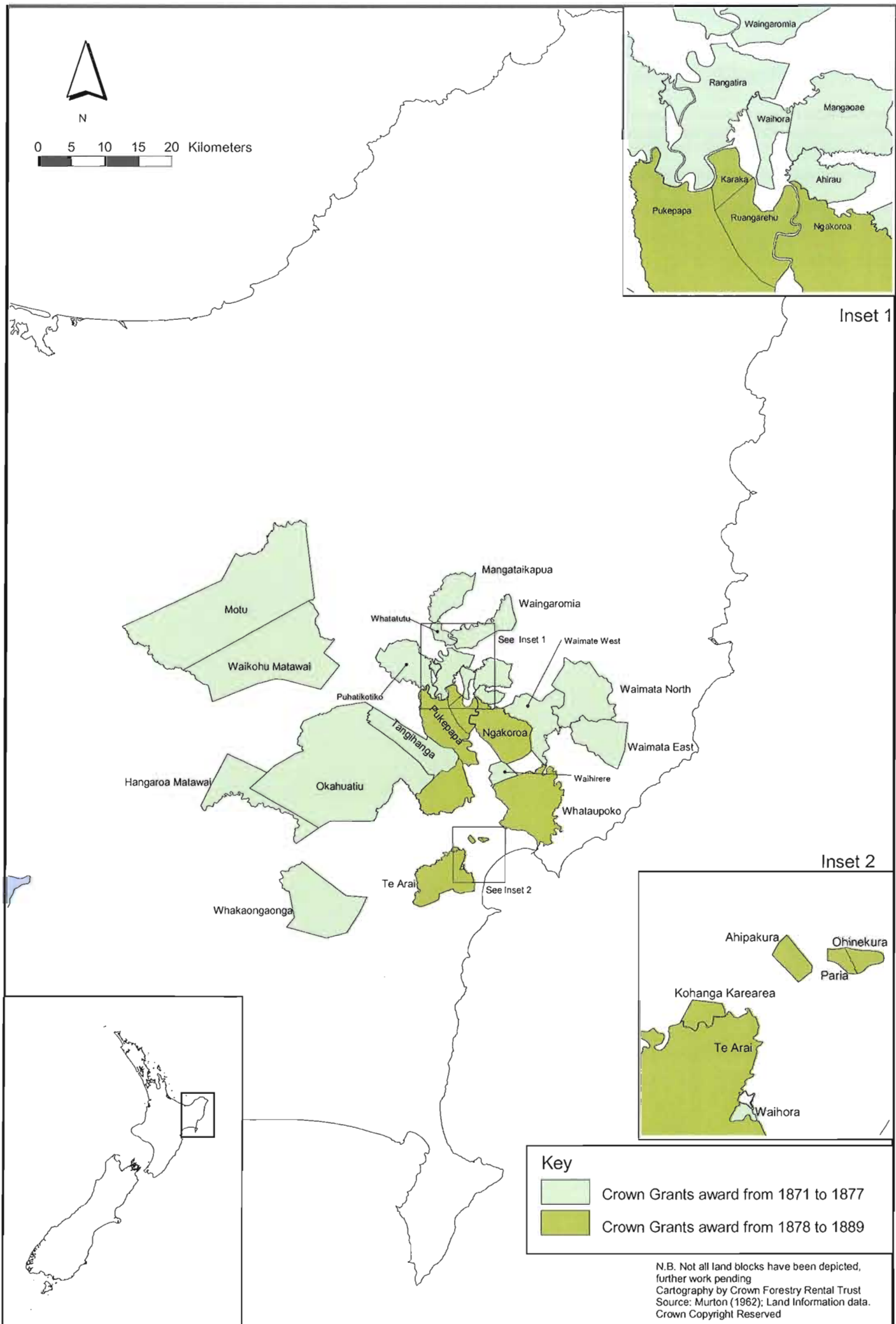


Map 6 Land Conceded to the Crown by the Native Owners 1868



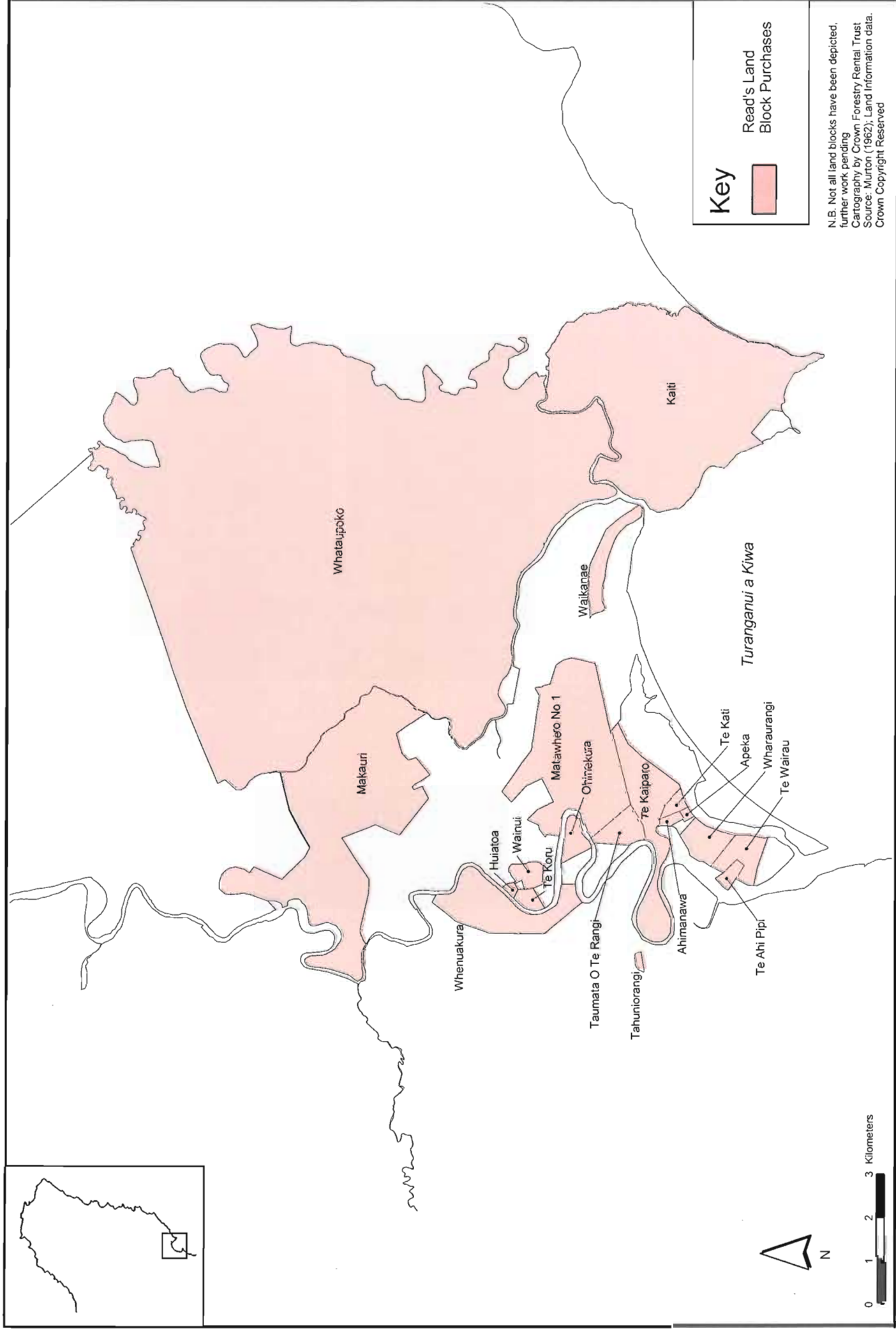
Map 7 Crown Grants Under the Poverty Bay Commission





Map 8 Crown Grants 1871 to 1889





Map 9 Read's Land Purchases in Turanganui a Kiwa by 1878

Bibliography

Murton, B.J., 'Settlement in Poverty Bay, 1868-1889: A Study in Historical Geography'. M.A Geography thesis, University of Auckland, 1976.

O'Malley, V. "An Entangled Web": Te Aitanga-a-Mahaki Land and Politics, 1840-1873, and their Aftermath'. A Report Commissioned by the Te Aitanga-a-Mahaki Claims Committee, 1998.

Pickens, P. "Ngai Tamanuhiri Land Alienation Report". A Report Commissioned by the Waitangi Tribunal, 2000.

Rose, K. 'Te Aitanga-a-Mahaki Land and Autonomy, 1873-1890' Report prepared for Te Aitanga-a-Mahaki Claims Committee, 1999

Rose, K. 'Te Aitanga-a-Mahaki Land: Alienation and Efforts at Development, 1890-1970' Report prepared for Te Aitanga-a-Mahaki Claims Committee, 1999

Salmond, A. Two Worlds, First meetings between Maori and Europeans 1642-1772. Penguin, Auckland, 1991.

Small, Fiona, and Cleaver, Phillip, 'Rongowhakaata and the Native Land Court, 1873-1900', Crown Forestry Rental Trust, 2000.

Stirling, B. 'Rongowhakaata and the Crown, 1840-1873'. A Report Commissioned by the Crown Forestry Rental Trust, 2001.