

DUPLICATE

C2001/04/00542

HOI 8/4 # A33

RECEIVED WAIKANGI TRIBE WELLINGTON
30 MAR 2001
DEPT. OF FORESTRY WELLINGTON

Turanganui a Kiwa

Historical Overview Maps

Part 1

Moka Apiti and Moira Jackson
Crown Forestry Rental Trust
March 2001



CROWN FORESTRY
RENTAL TRUST
NGĀ KAITIĀKI REPI NGĀHURI KĀRAUNA

Table of Contents

General remarks

- Map 1. *Satellite imagery map of Turanganui a Kiwa*
- Map 2. *General Orientation Map*
- Map 3. *Places of Conflict 1864-67 (after "Map of Military operations in Bay of Plenty – East Coast districts 1864 – 1871" n.d.)*
- Map 4. *Places of conflict in 1868 involving Te Kooti and his followers (after Binney, "Redemption Songs" 1995)*
- Map 5. *1866 - 1868 Raupatu Boundaries as shown on "Chapman's Map of the North Island of New Zealand Including the Provinces of Auckland, Taranaki, Hawke's Bay and Wellington" n.d.*
- Map 6. *Oil springs and 1866-1868 Raupatu Boundaries*
- Map 7. *Main Land Blocks in the Turanganui a Kiwa district*
- Map 8. *Land blocks - detail of Waipaoa River Flats*
- Map 9. *Land blocks - detail of upper Waipaoa River*
- Map 10. *Active Marae today in the Gisborne Inquiry District*
- Map 11. *Changes in the Waipaoa River since 1868 (Waipaoa River data courtesy Landcare and Gisborne District Council)*

General remarks

This is the first of a series of map books that will be produced for the Gisborne Inquiry. This preliminary map book contains a set of maps graphically representing some key information from a generic perspective.

A geographic information system (GIS) was used to create these maps. The GIS software packages used are ARCVIEW and ARC/INFO, both are products from Environmental Systems Research Institute Inc. Redlands California (ESRI). All maps have been geo-referenced to NZ map grid. This allows for comparison of a wide range of geographical information taken from many sources.

There are several methods employed to make GIS coverages in the production of these maps.

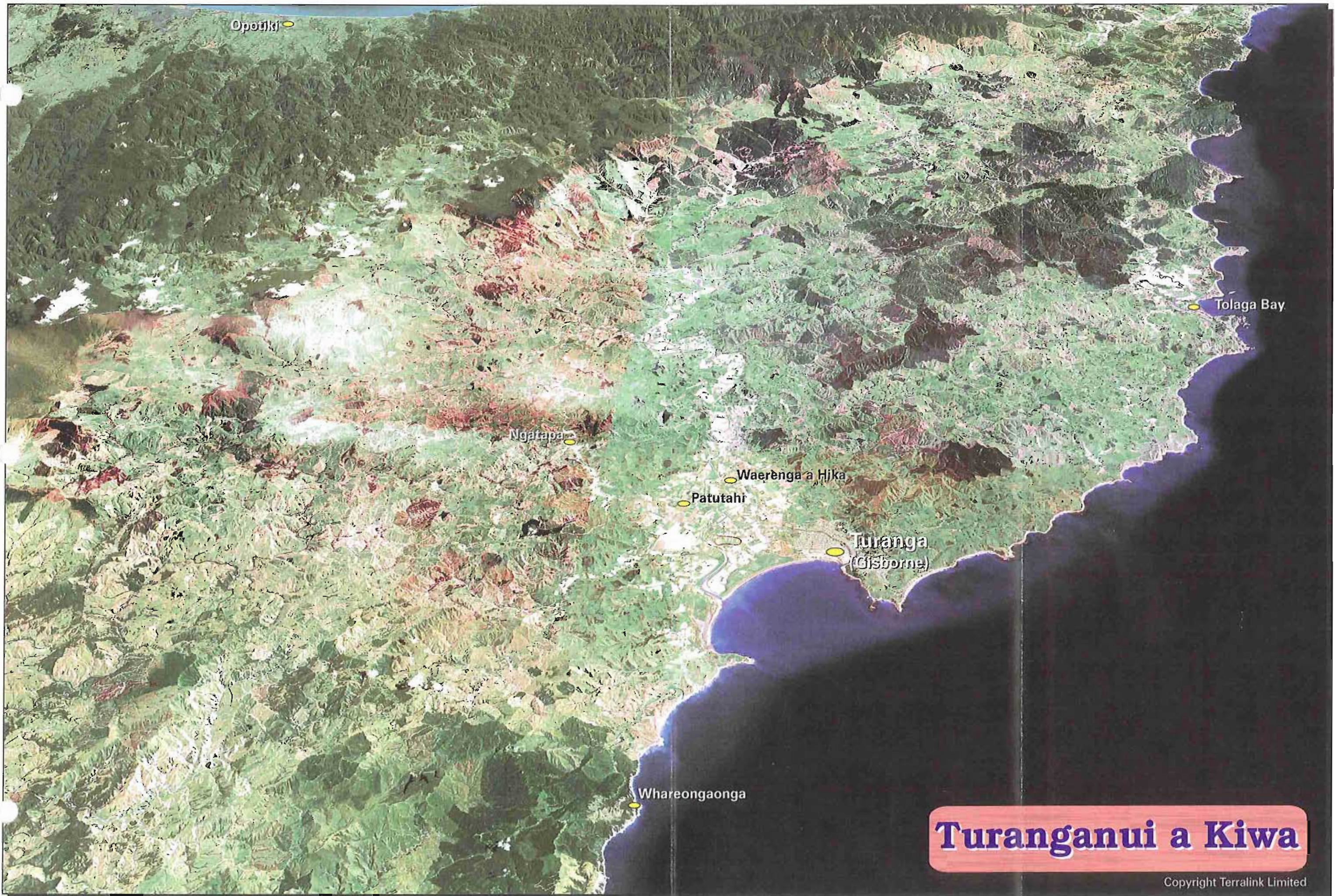
Maori Land blocks and other land blocks are initially identified using ML and SO plans and located using various cadastral datasets including the LINZ digital cadastral database (dcdb), NZMS 261 cadastral maps and earlier Series 13 Survey District plans. As well as other relevant maps such as *Gisborne Harbour Works Drawings to Accompany Report of Marine Engineer (December 1890)* are utilised when necessary. Many blocks still cannot be identified using this process and several other processes have been developed, such as scanning ML plans and geo-referencing to NZ map grid where possible. This latter process is particularly useful for locating old blocks where natural features and block boundaries have changed through time.

The primary land blocks illustrated on Maps 7, 8 and 9 were located using the above processes. The blocks were then digitised and a relational database created. Please note that further work is pending on the aforementioned maps as several blocks have proved problematic, in spite of this approximately 90% of the original blocks in the Gisborne Inquiry District are identified on the maps. Further work is continuing and when complete, revised maps will be included in the next set of historical overview maps due in August 2001.

Other historical data is obtained through various but not dissimilar processes. Key historical maps have been scanned and geo-referenced, data is then digitised from the scanned images. One example of this process is the information relating to places of conflict shown on Map 3 which were digitised directly from a scanned image of a nineteenth century map, *Map of Military operations in Bay of Plenty – East Coast districts 1864 – 1871* n.d. Similarly Map 5, the confiscation lines shown were digitised from *Chapman's Map of the North Island of New Zealand Including the Provinces of Auckland, Taranaki, Hawke's Bay and Wellington* n.d.

The Waipaoa river data for Map 11 was purchased from Landcare Research who had digitised the river changes for Gisborne District Council in 1995. Map 1 was produced by Terralink Ltd using satellite imagery.

Moira Jackson
Mapping Coordinator
Crown Forestry Rental Trust
March 2001



Opoitiki

Tolaga Bay

Ngatapa

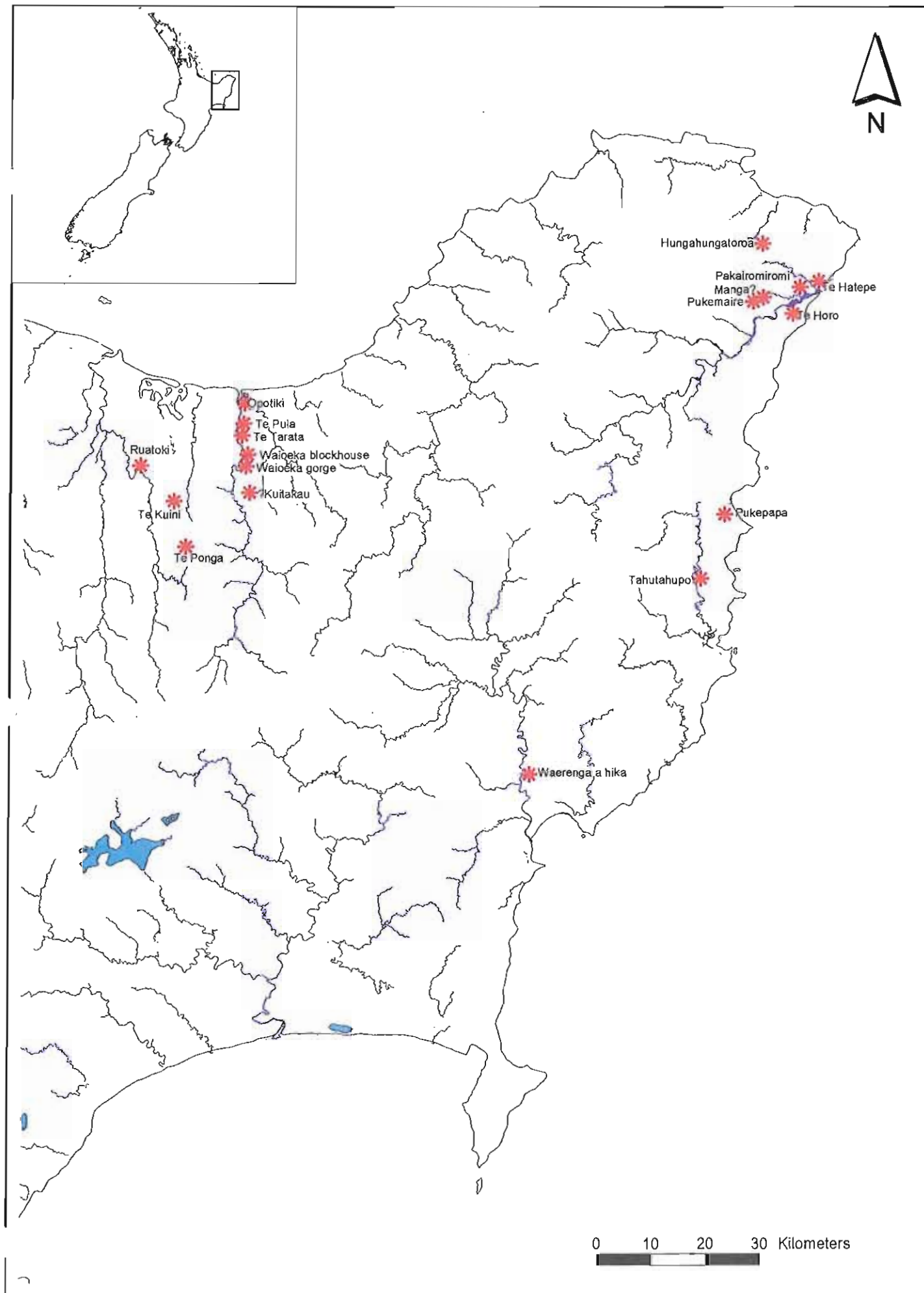
Waerenga a Hika

Patutahi

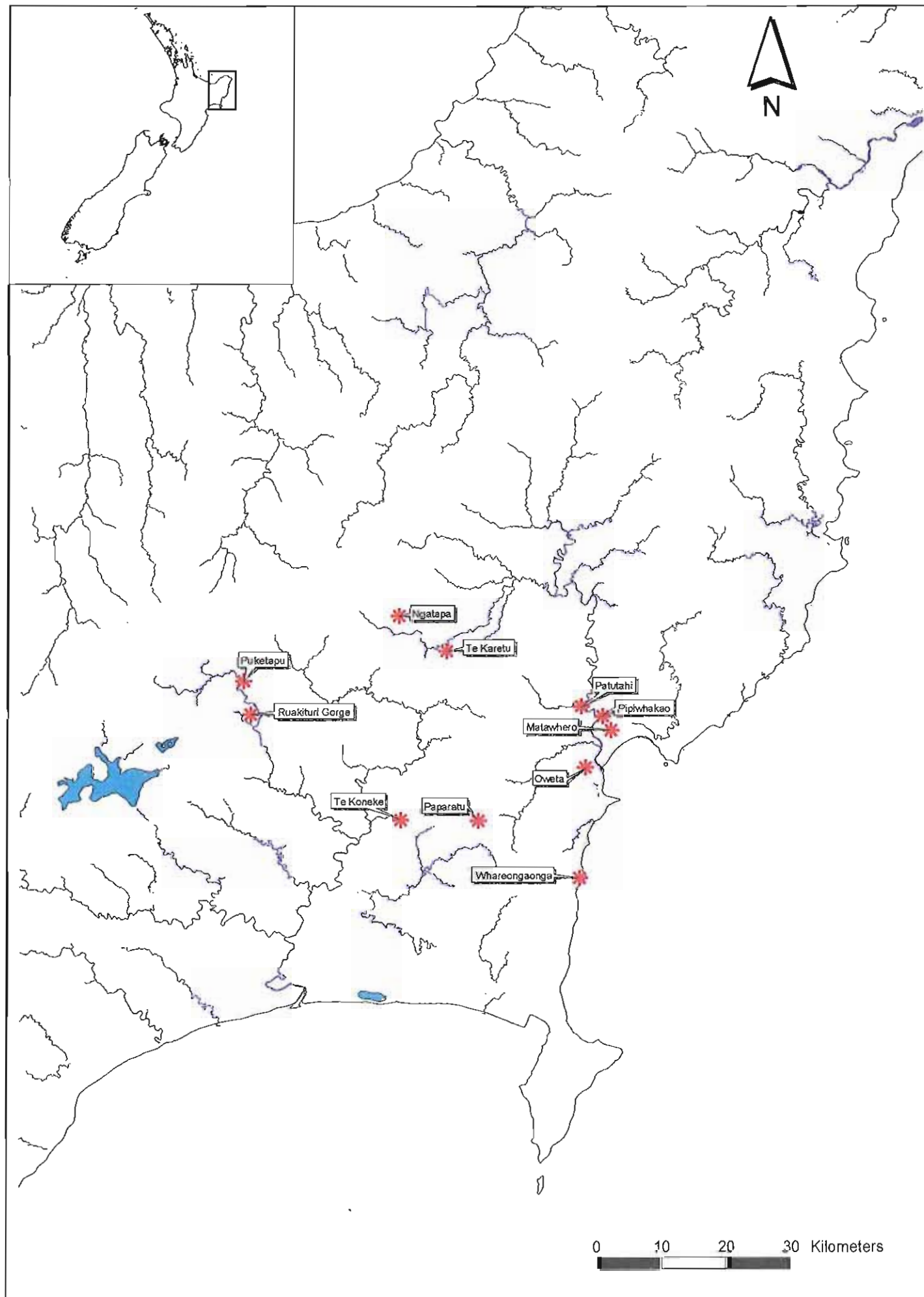
Turanga
(Gisborne)

Whareongaonga

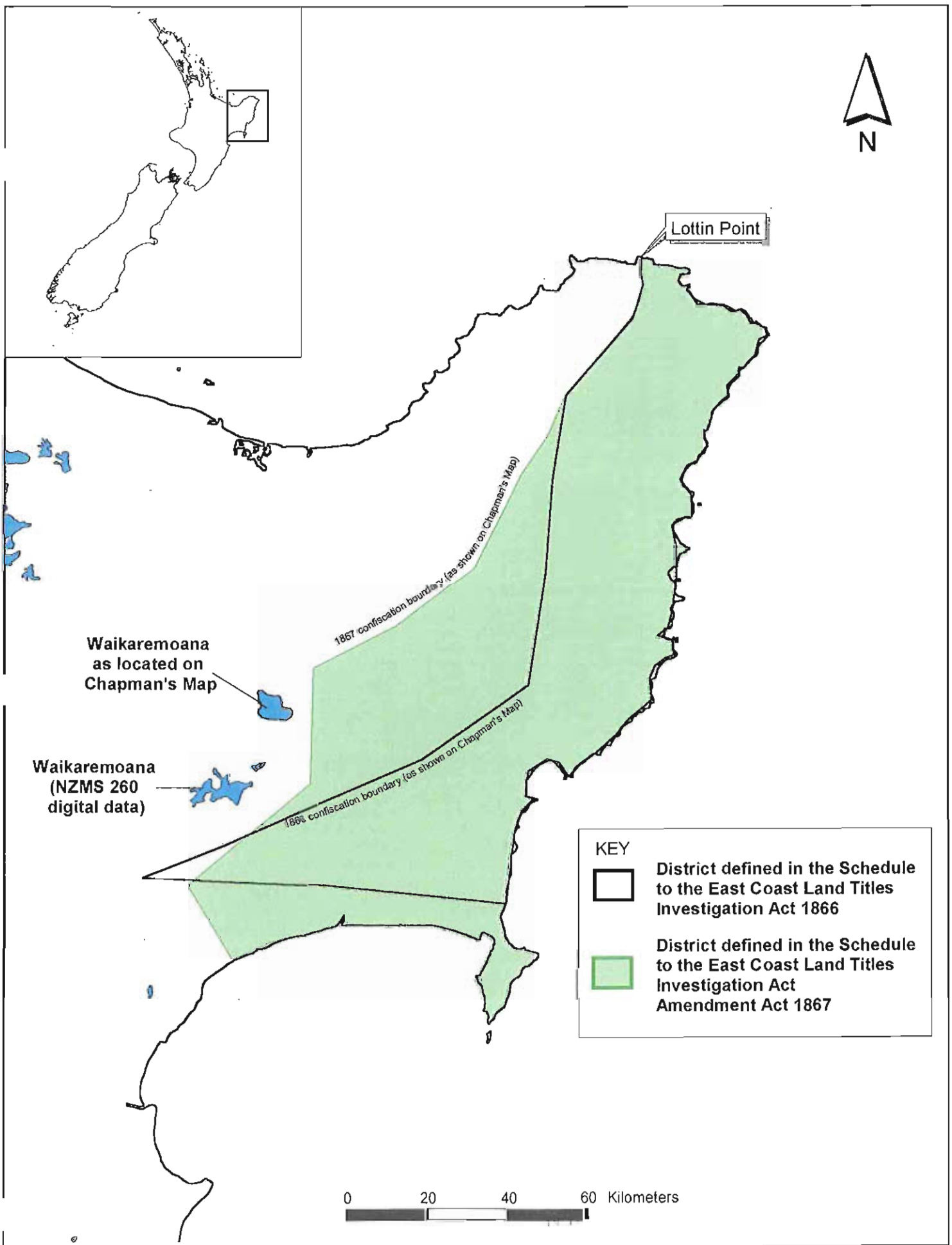
Turanganui a Kiwa



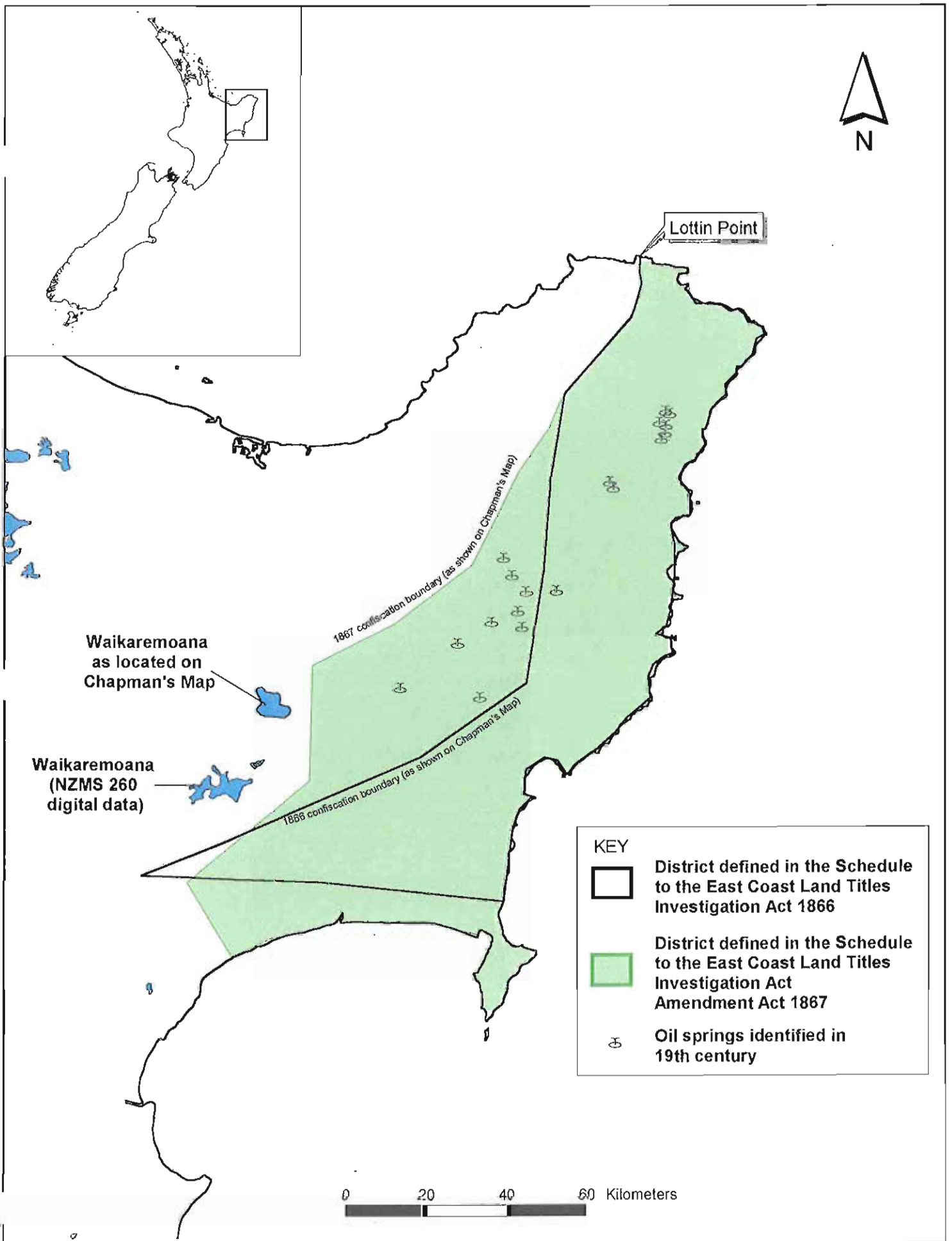
Map 3. Places of Conflict 1864-67 (after "Map of Military operations in Bay of Plenty -East Coast districts 1864 - 1871" n.d.)



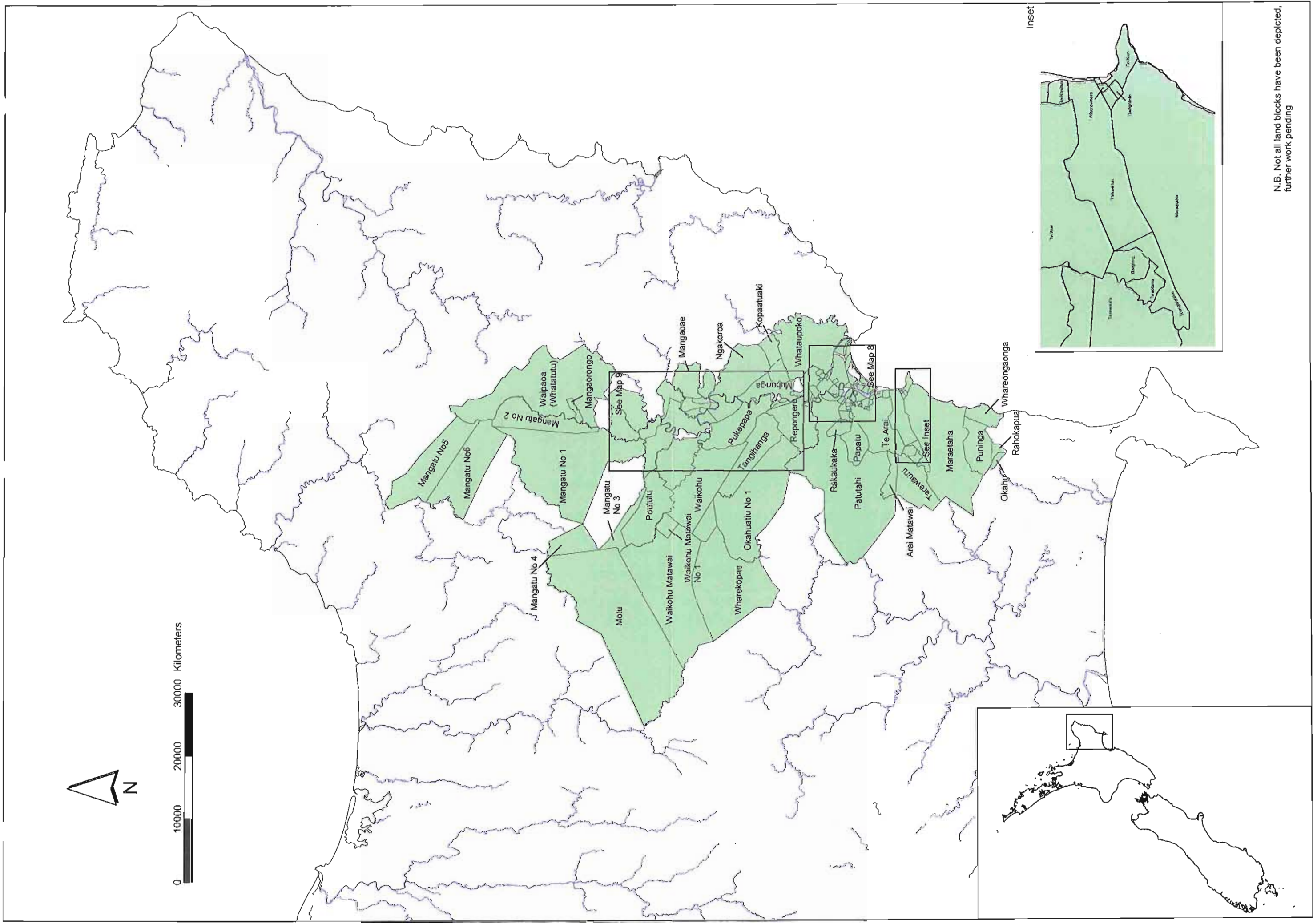
Map 4 Places of conflict in 1868 involving Te Kooti and his followers
 (after Binney, "Redemption Songs" 1995)



Map 5 1866-1868 Raupatu Boundaries as shown on "Chapman's Map of the North Island of New Zealand Including the Provinces of Auckland, Taranaki, Hawke's Bay and Wellington" n.d



Map 6 Oil springs and 1866-1868 Raupatu Boundaries



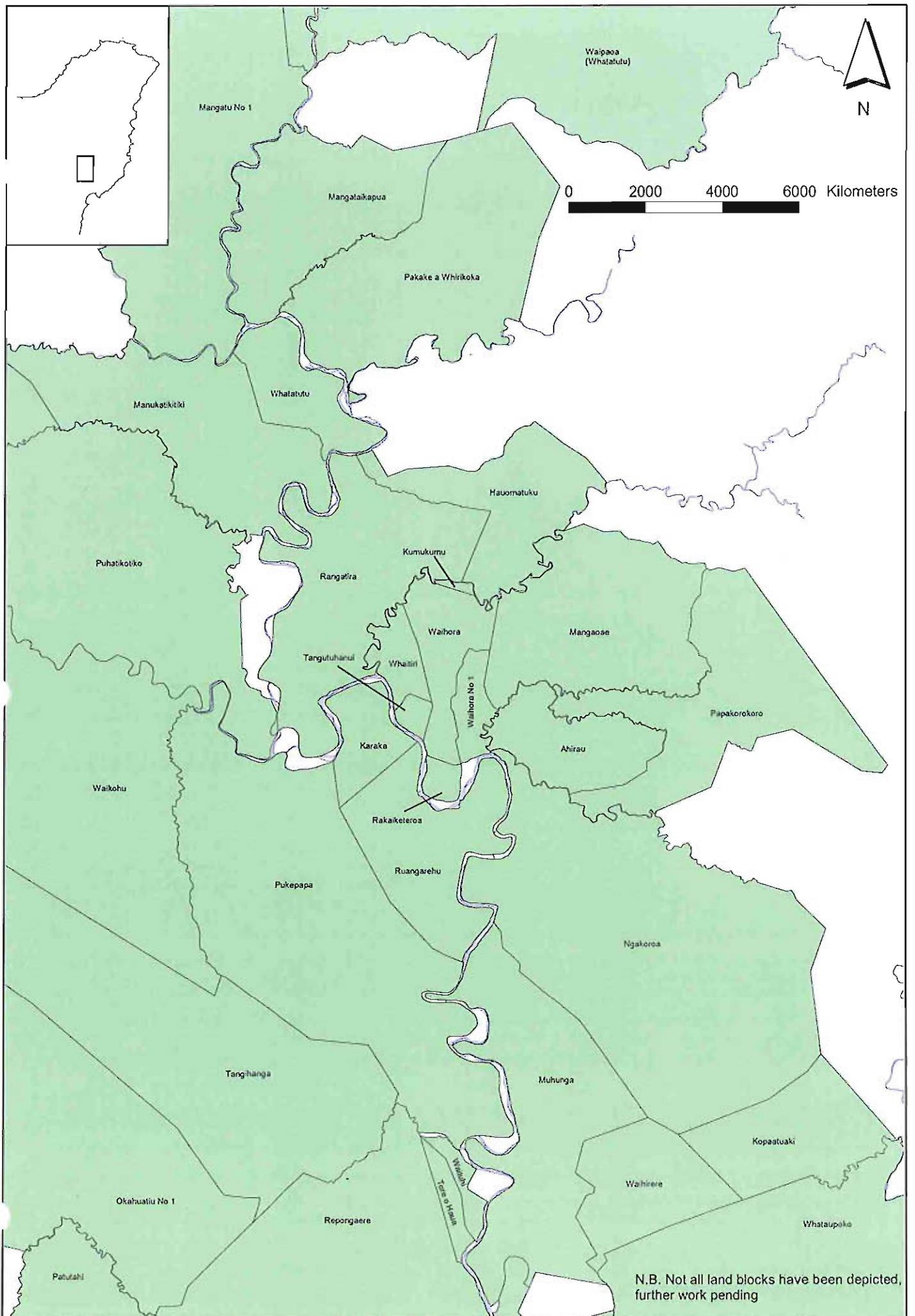
N.B. Not all land blocks have been depicted, further work pending

Map 7 Main Land Blocks in the Turanganui a Kiwa district

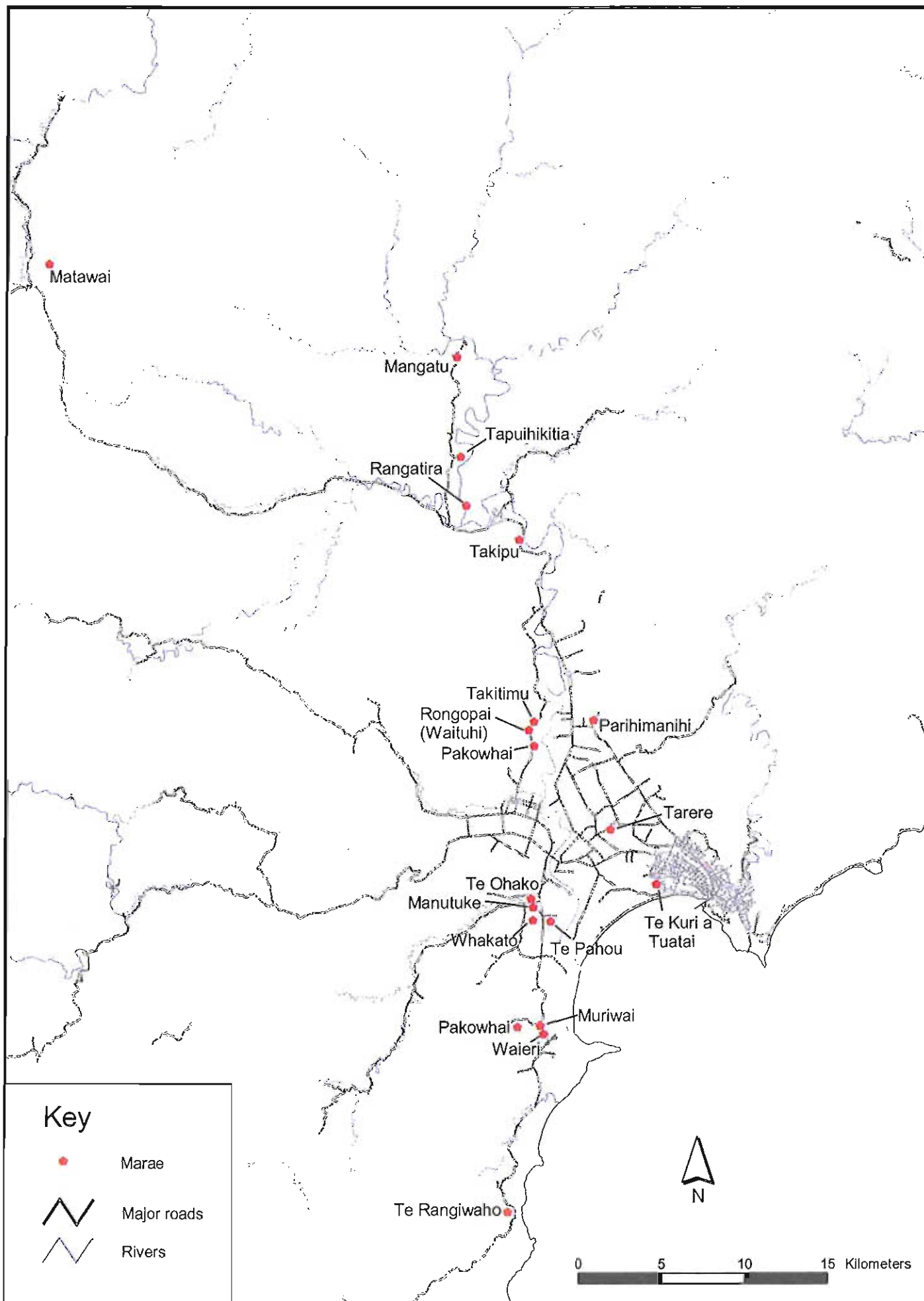


N.B. Not all land blocks have been depicted, further work pending

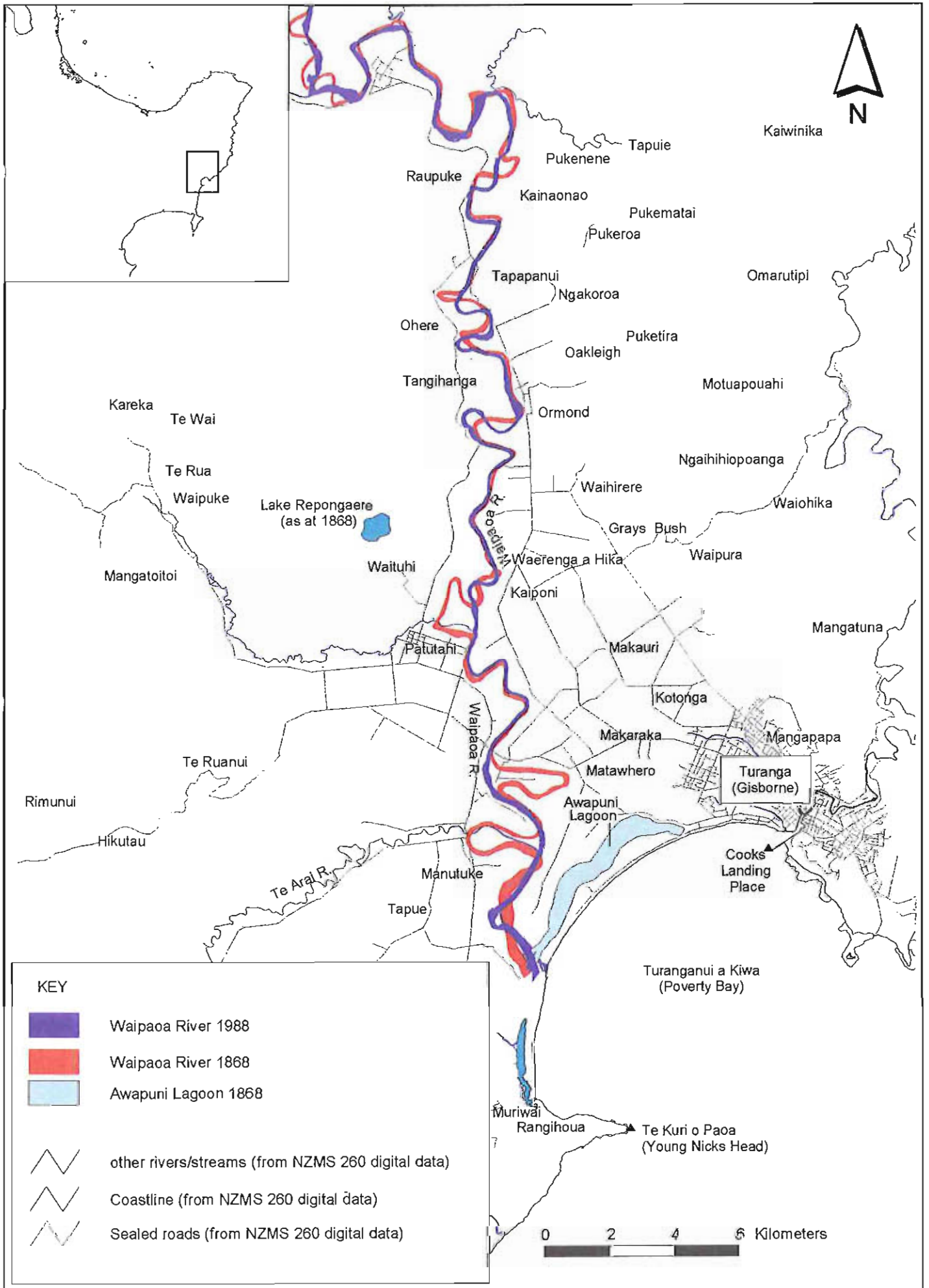
Map 8 Land blocks - detail of Waipaoa River Flats



Map 9 Land blocks - detail of upper Waipaoa River



Map 10 Active Marae today in the Gisborne Inquiry District



Map 11 Changes in the Waipaoa River since 1868
(Waipaoa River data courtesy Landcare and Gisborne District Council)