

OFFICIAL

Wai 814 #B26.

(Wai 274 #B23; Wai 283 #B23)

Te Aitanga a Mahaki

[WAI 274, 283, 814]

GIS Map Booklet

Moka Apiti
Crown Forestry Rental Trust
December, 2001

General remarks

This map book contains a set of maps graphically representing components of Kathryn Rose's 2 reports for Te Aitanga a Mahaki.

It would be best viewed in conjunction with these two reports. It should be noted that only land blocks referred to in the Gisborne Inquiry District have been depicted. And that Kathryn's two reports cover a greater area than is represented in this Map Booklet. The purposes of these maps are to graphically represent where Te Aitanga a Mahaki land interests lay inside the Gisborne Inquiry District.

Thank you to all parties who have contributed to the completion of this work. Special acknowledgement to Te Aitanga a Mahaki and Kathryn Rose for their assistance and contributions towards the maps, for the use and access to their resources and without whose guidance this would have become a near impossibility.

Moka Apiti
Geographic Analyst
Crown Forestry Rental Trust
December, 2001

Table of Content

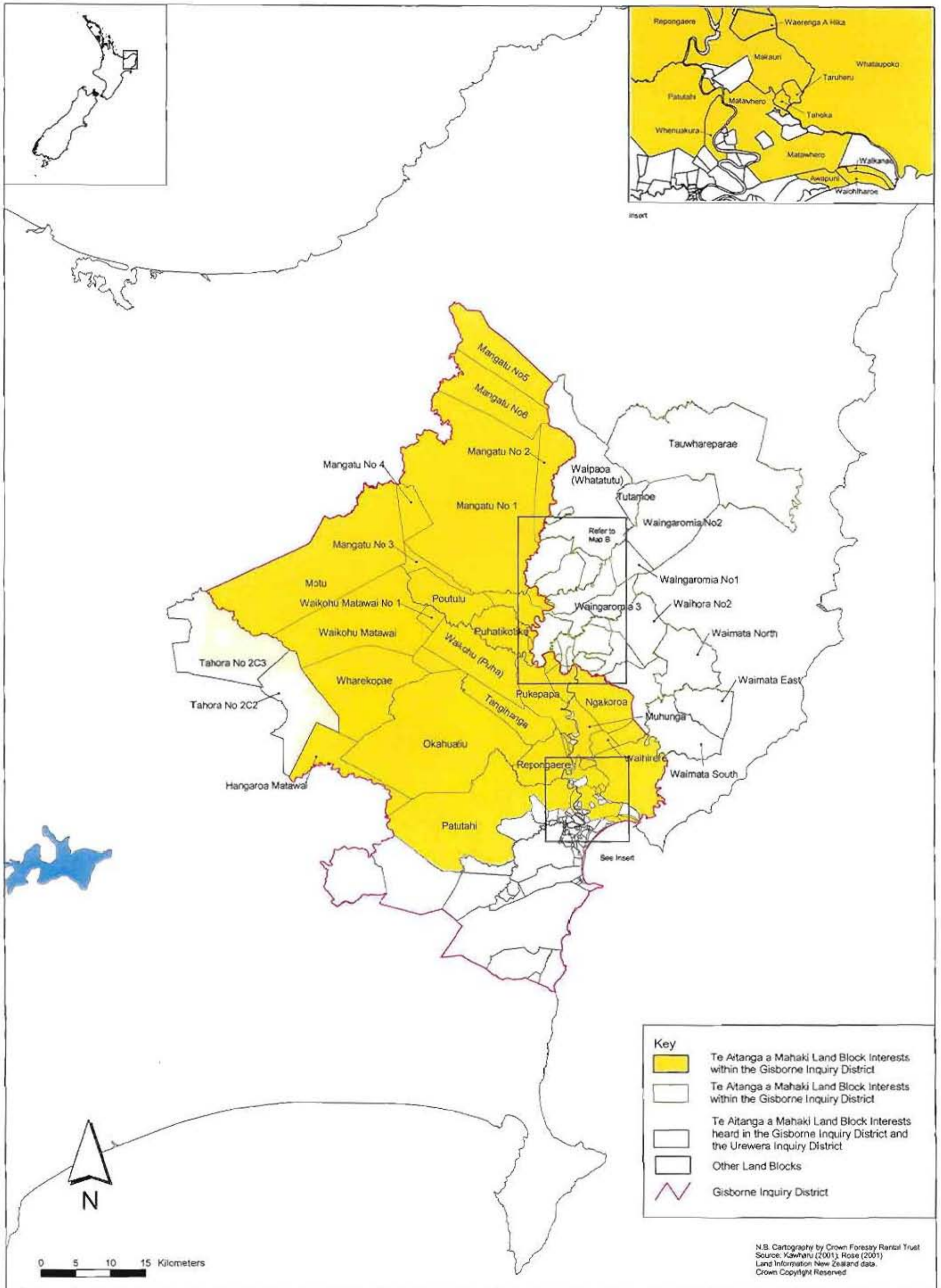
- A. Te Aitanga a Mahaki Land Blocks of Interest
- B. Blocks Adjacent to the Gisborne Inquiry District

Report 1 Land and Autonomy 1873 - 1890

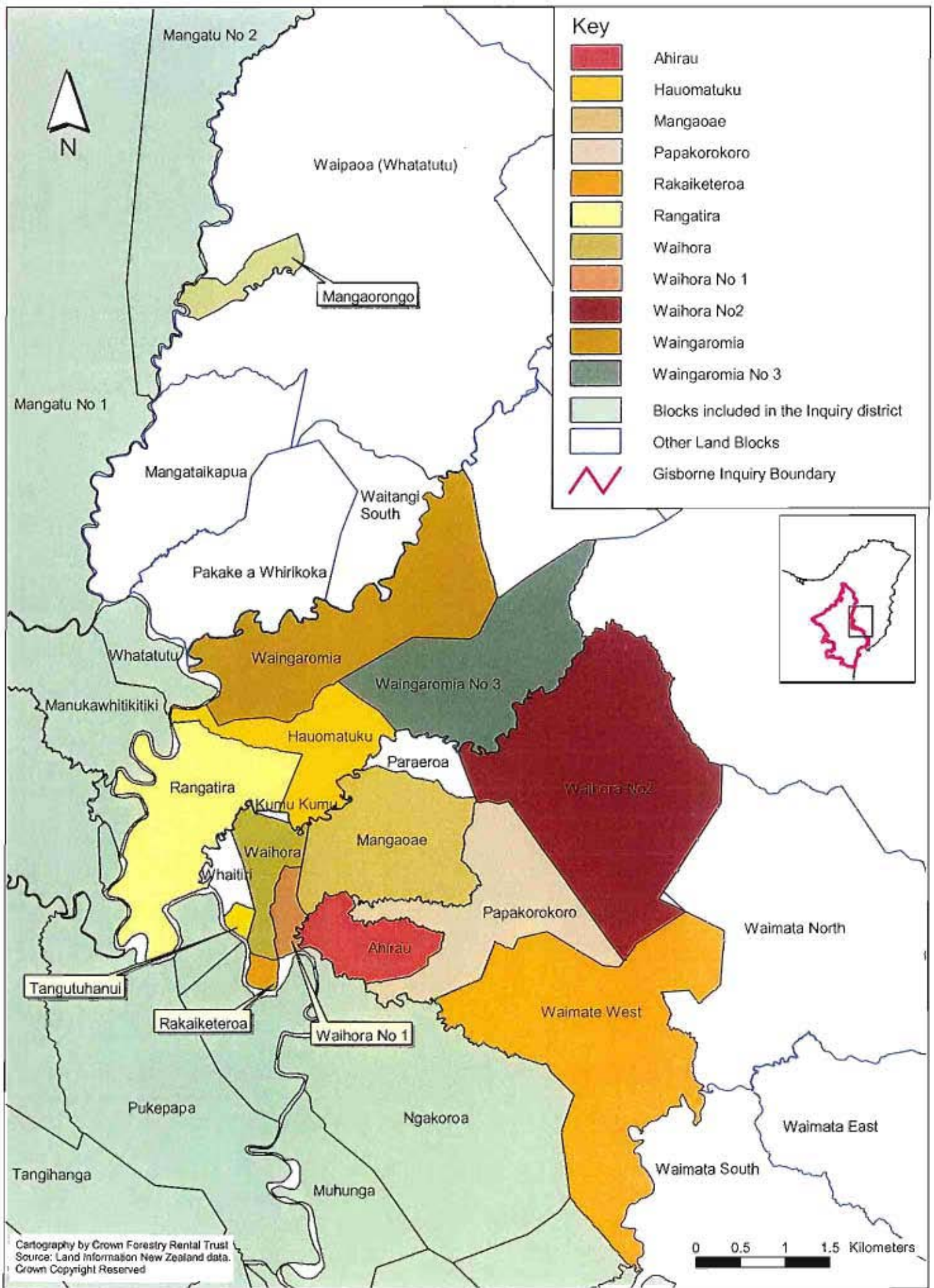
1. Lands adjudicated on by 1877
2. Lands where Read claimed interest
3. Southern Mangatu Lands
4. Land alienated to 1877
5. Land alienated to 1877
6. Land alienated to 1884
7. Land alienated to 1884
8. NZ Native Settlement Company Holdings in 1886
9. Poututu Divisions
10. Land alienated to 1890
11. Land alienated to 1890

Report 2 Alienation and Effects at Development 1890-1970

1. Kopaatuaki Block division
2. Mangatu Incorporation Lands at 1900
3. Wi Pere Trust Estate 1908
4. Incorporations Formed 1902-April 1913
5. Incorporations at 1932
6. Incorporations at 1954
7. Incorporations at 1970
8. Gisborne -East Coast Region Land Utilisation Survey 1961-62 Land Tenure Sheet 2
9. Gisborne -East Coast Region Land Utilisation Survey 1961-62 Land Tenure Sheet 3



Map A Te Aitanga a Mahaki Land Block Interests

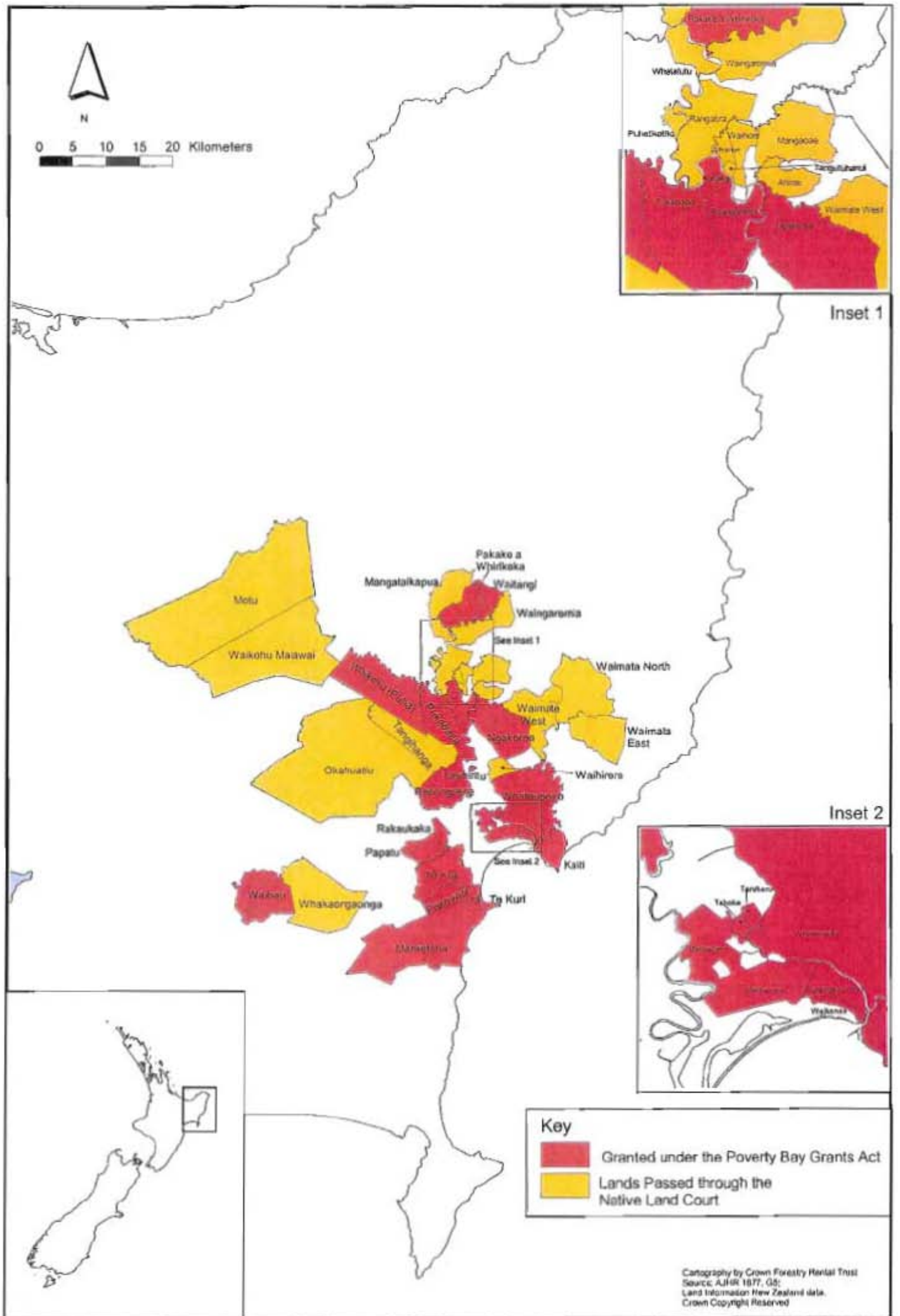


Map B Blocks Adjacent to the Gisborne Inquiry District

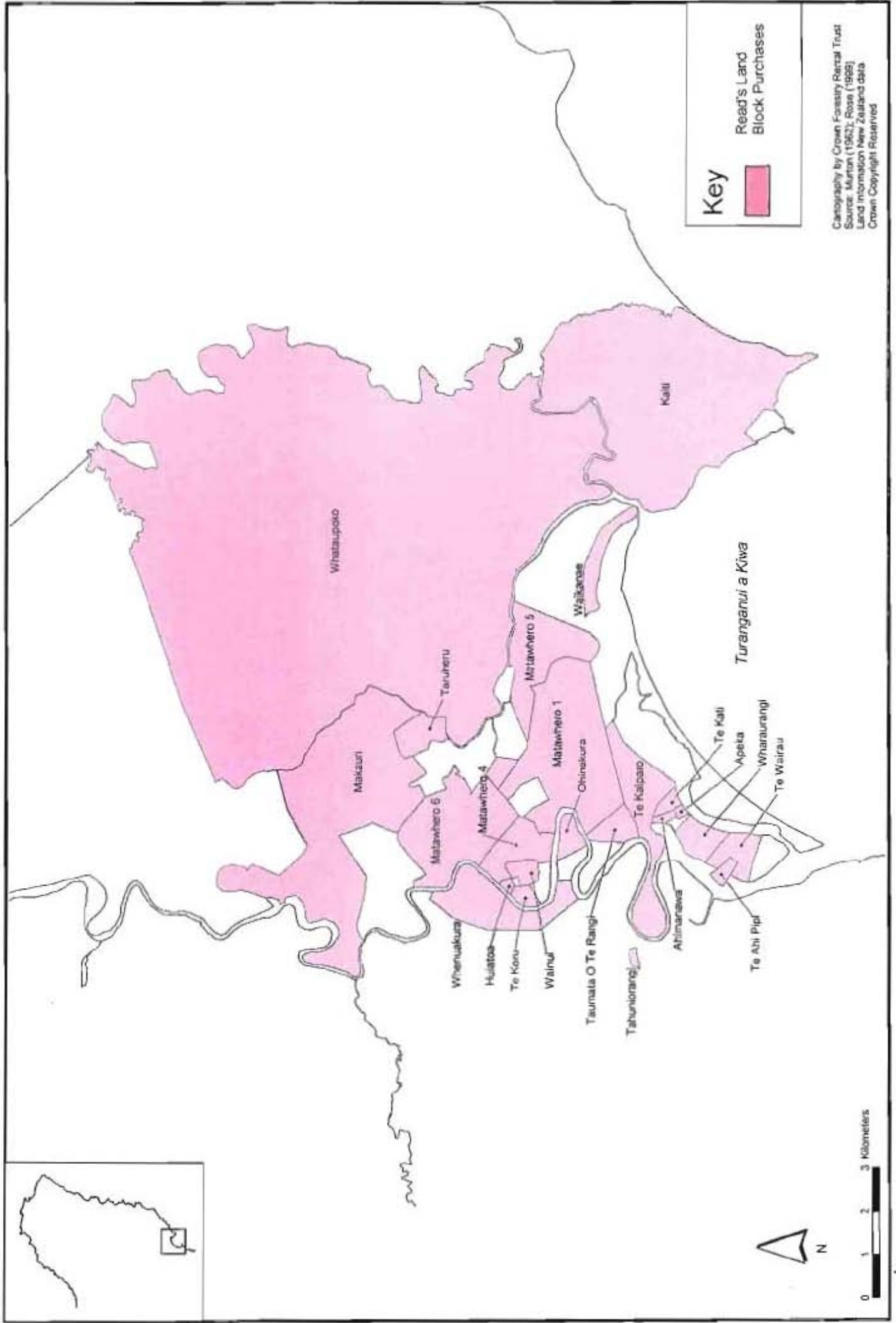


Report 1 Land and Autonomy 1873 - 1890

- 1. Lands adjudicated on by 1877**
- 2. Lands where Read claimed interest**
- 3. Southern Mangatu Lands**
- 4. Land alienated to 1877**
- 5. Land alienated to 1877**
- 6. Land alienated to 1884**
- 7. Land alienated to 1884**
- 8. NZ Native Settlement Company Holdings in 1886**
- 9. Poututu Divisions**
- 10. Land alienated to 1890**
- 11. Land alienated to 1890**



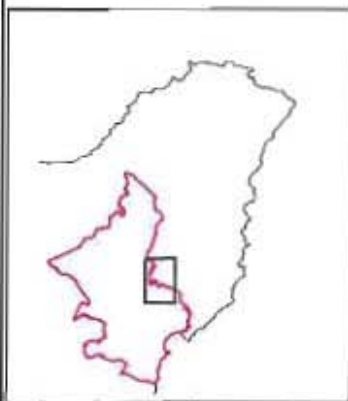
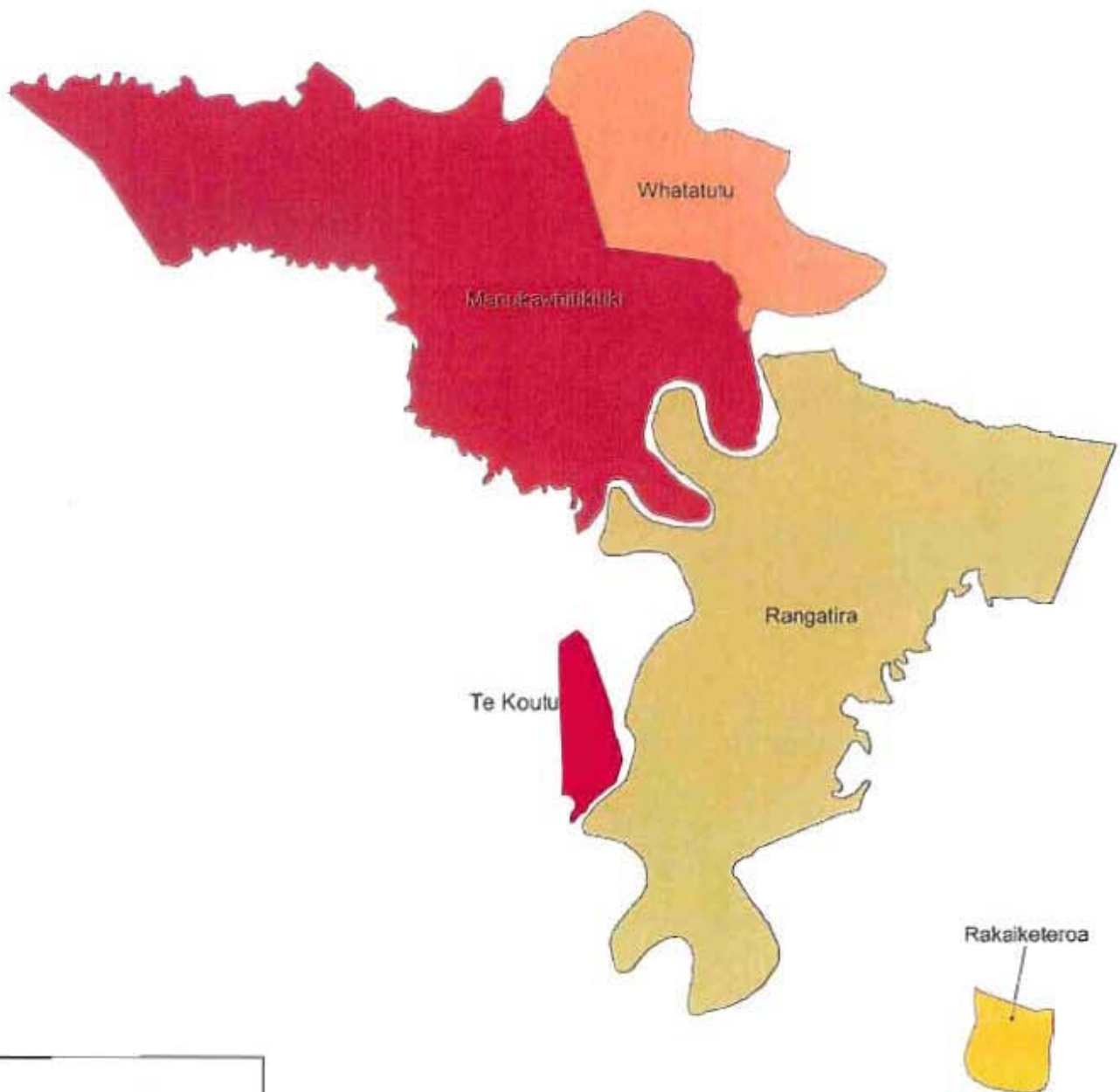
Map 1 Lands adjudicated on by 1877



Map 2 Lands where Read claimed interests



0 1 2 3 Kilometers

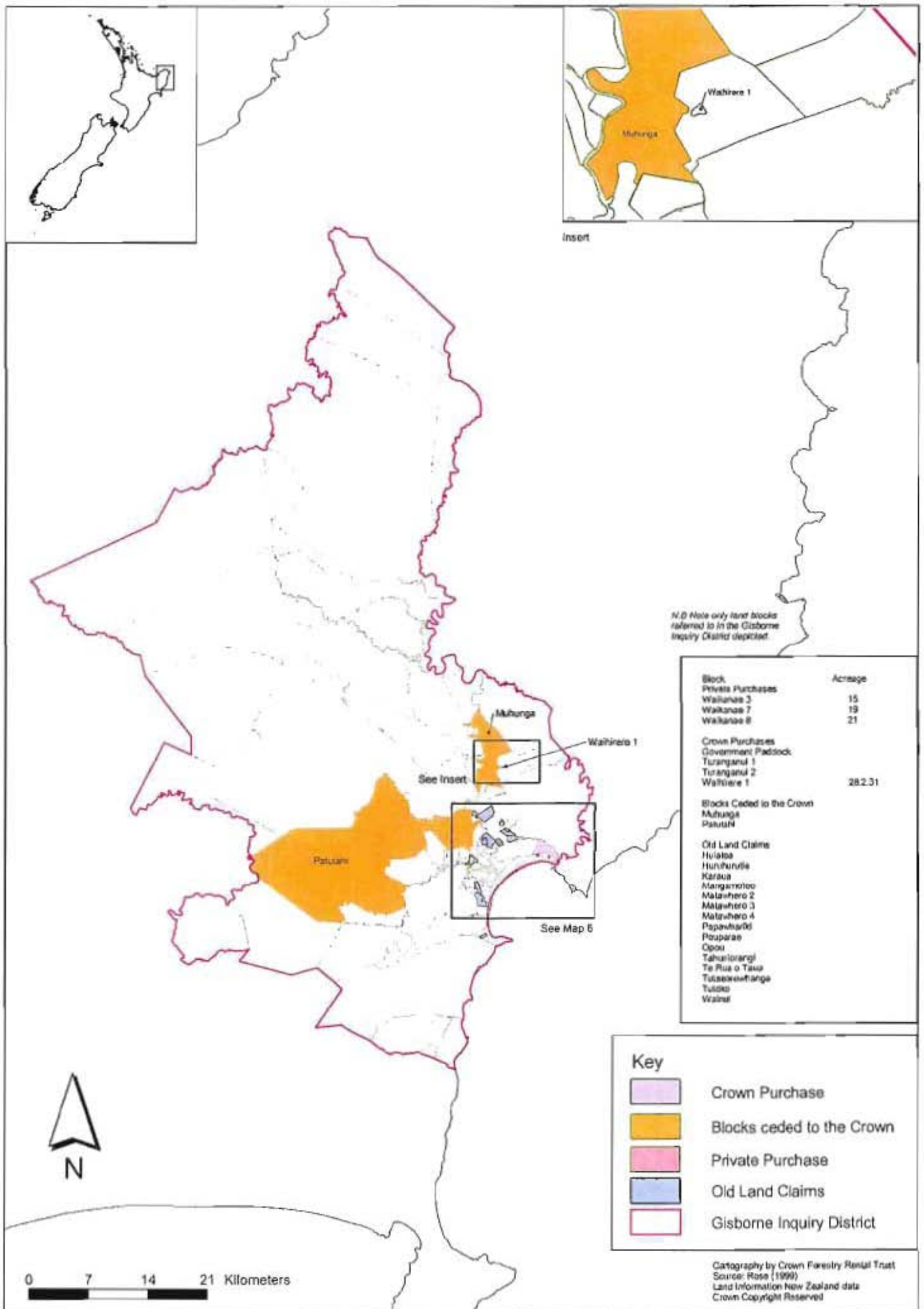


N.B Note Tepuhikitea not included

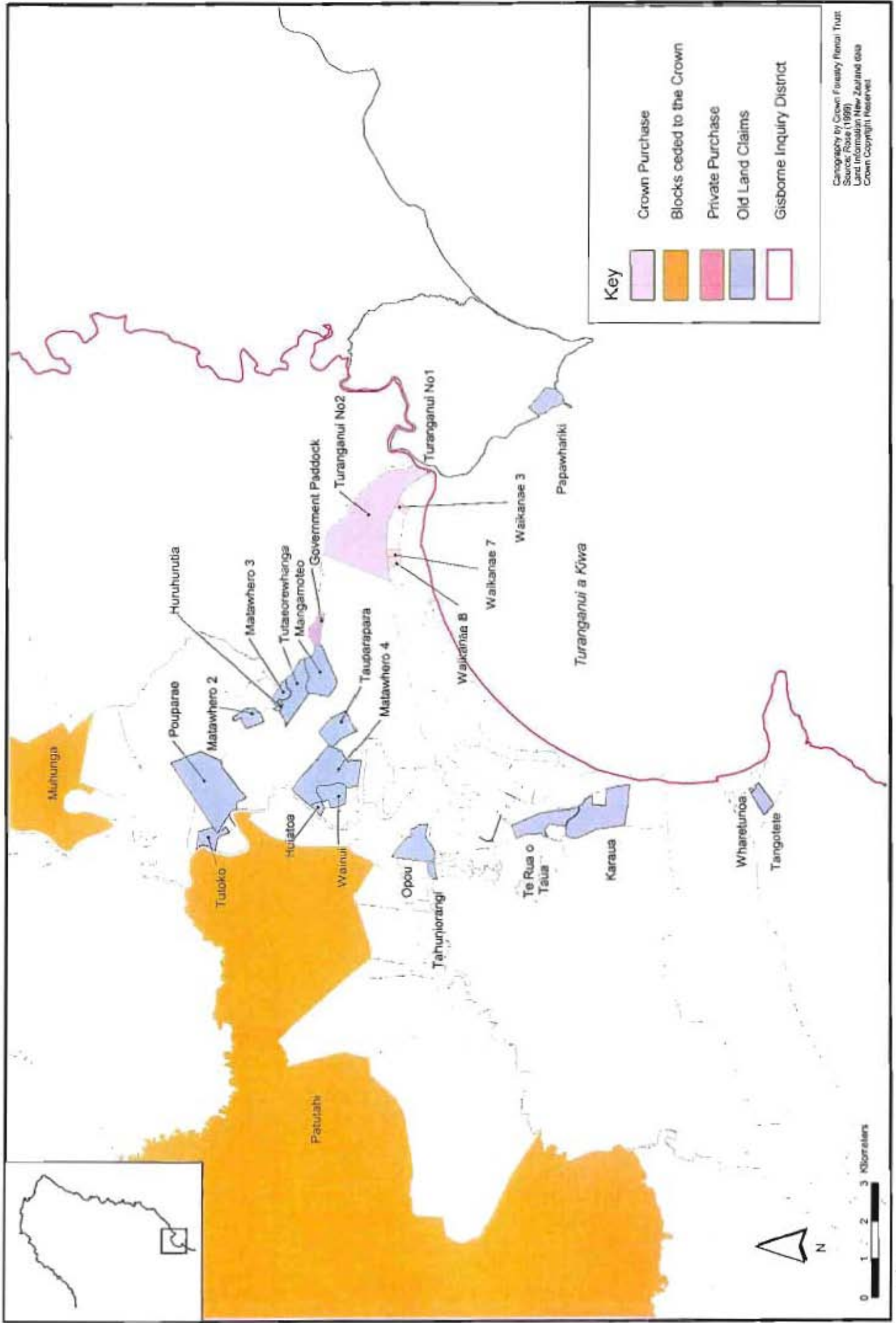
Cartography by Crown Forestry Rental Trust
Source: Rose (1999)
Land Information New Zealand data
Crown Copyright Reserved

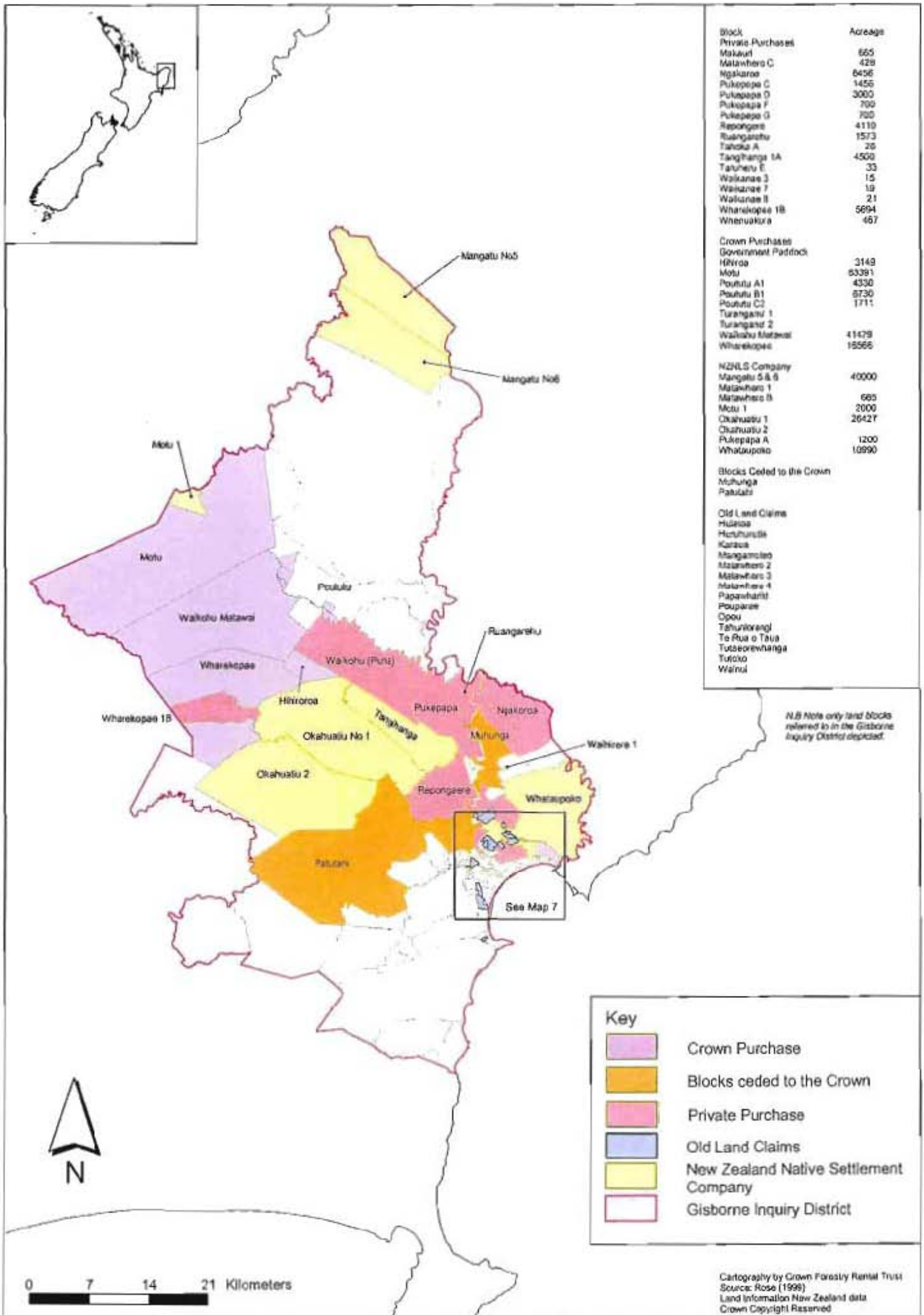


Map 3 Southern Mangatu Lands



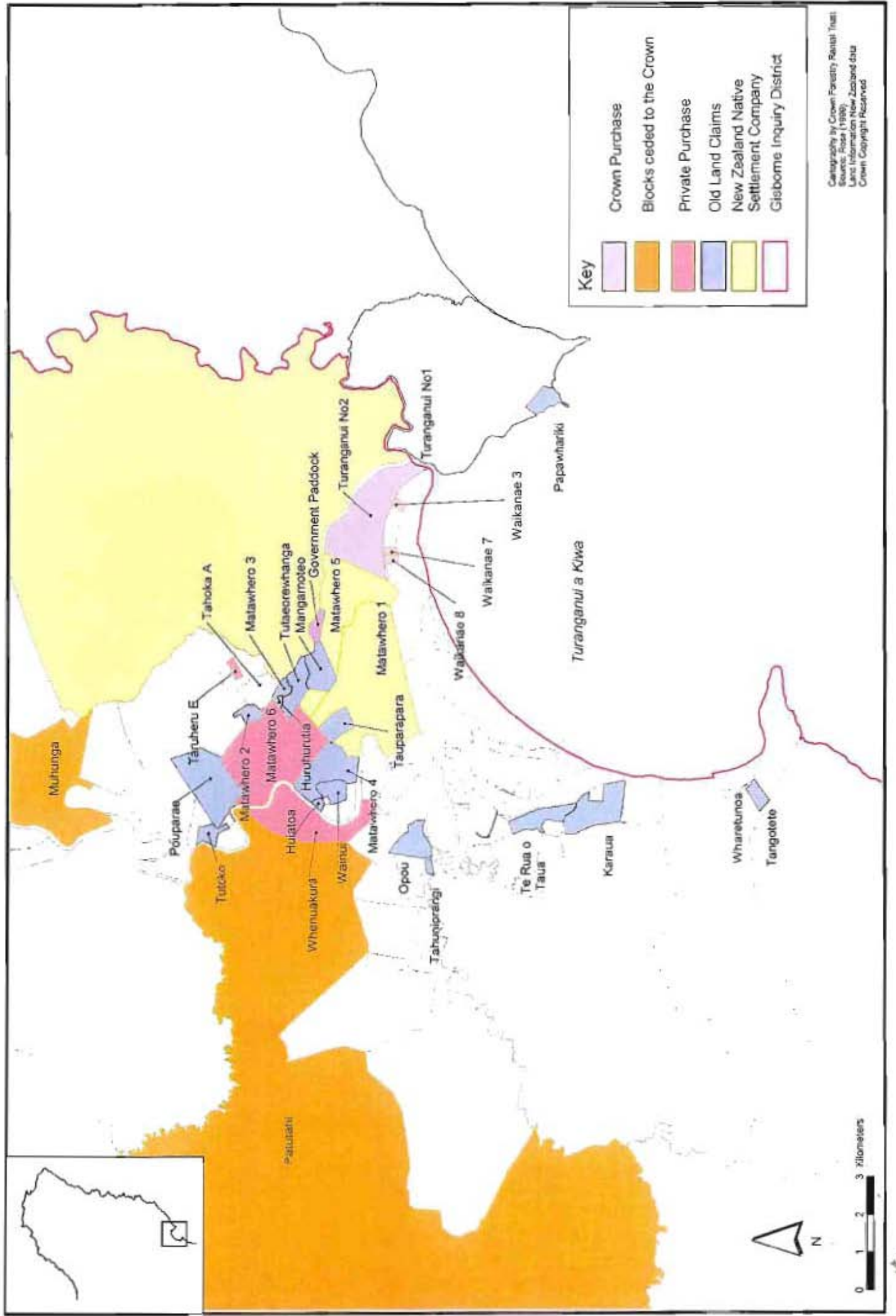
Map 4 Land Alienated to 1877

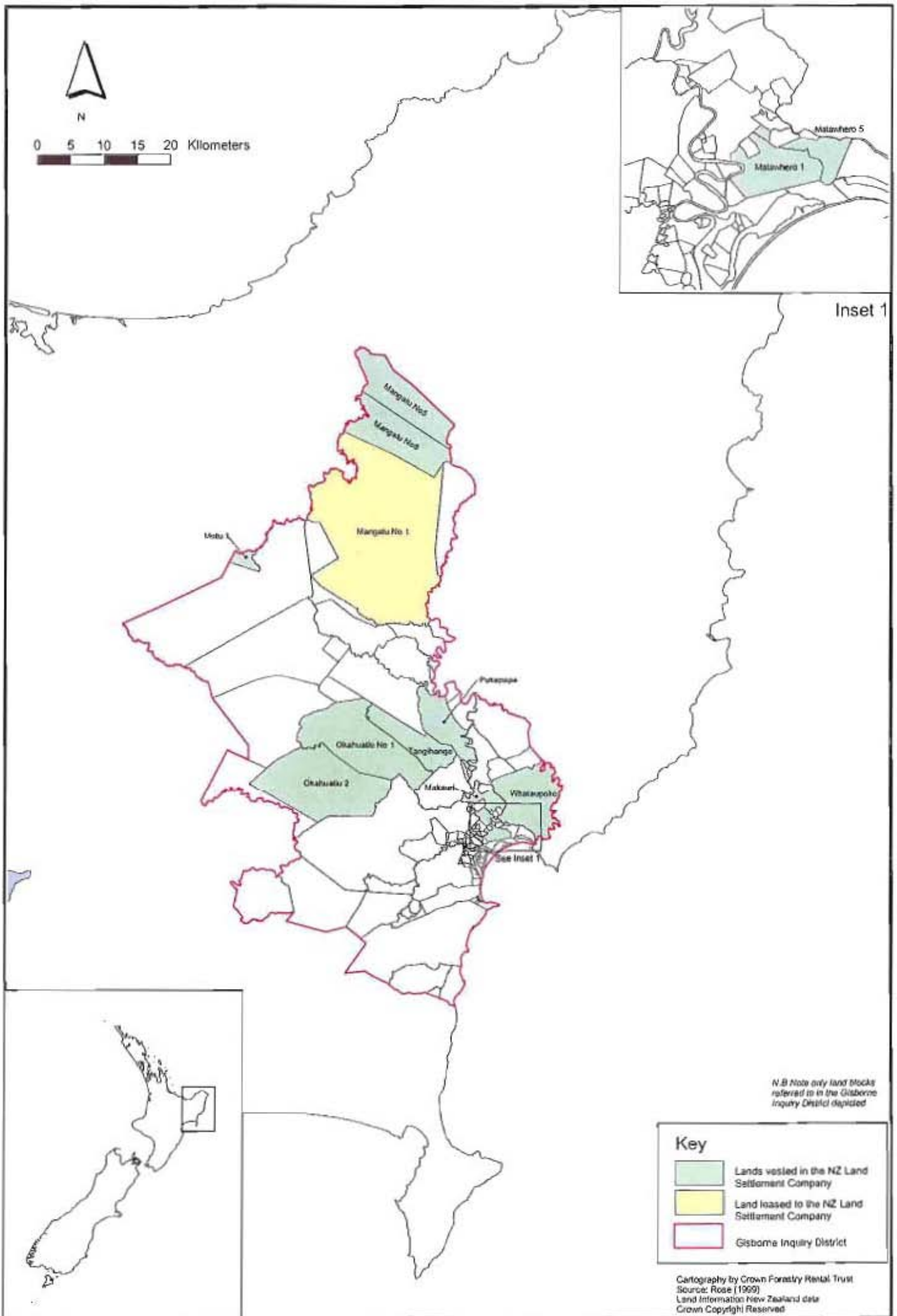




Map 6 Land Alienated to 1884

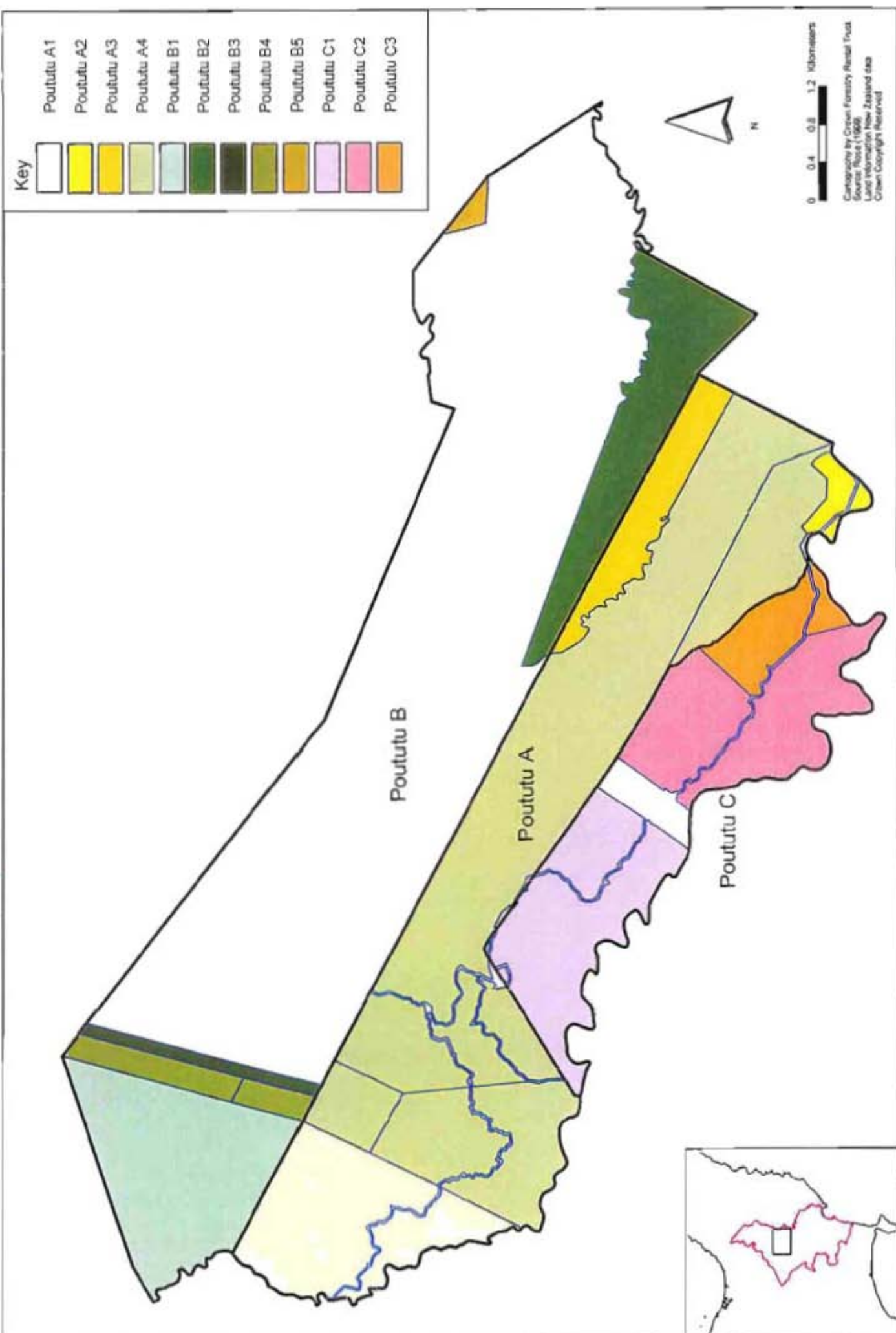




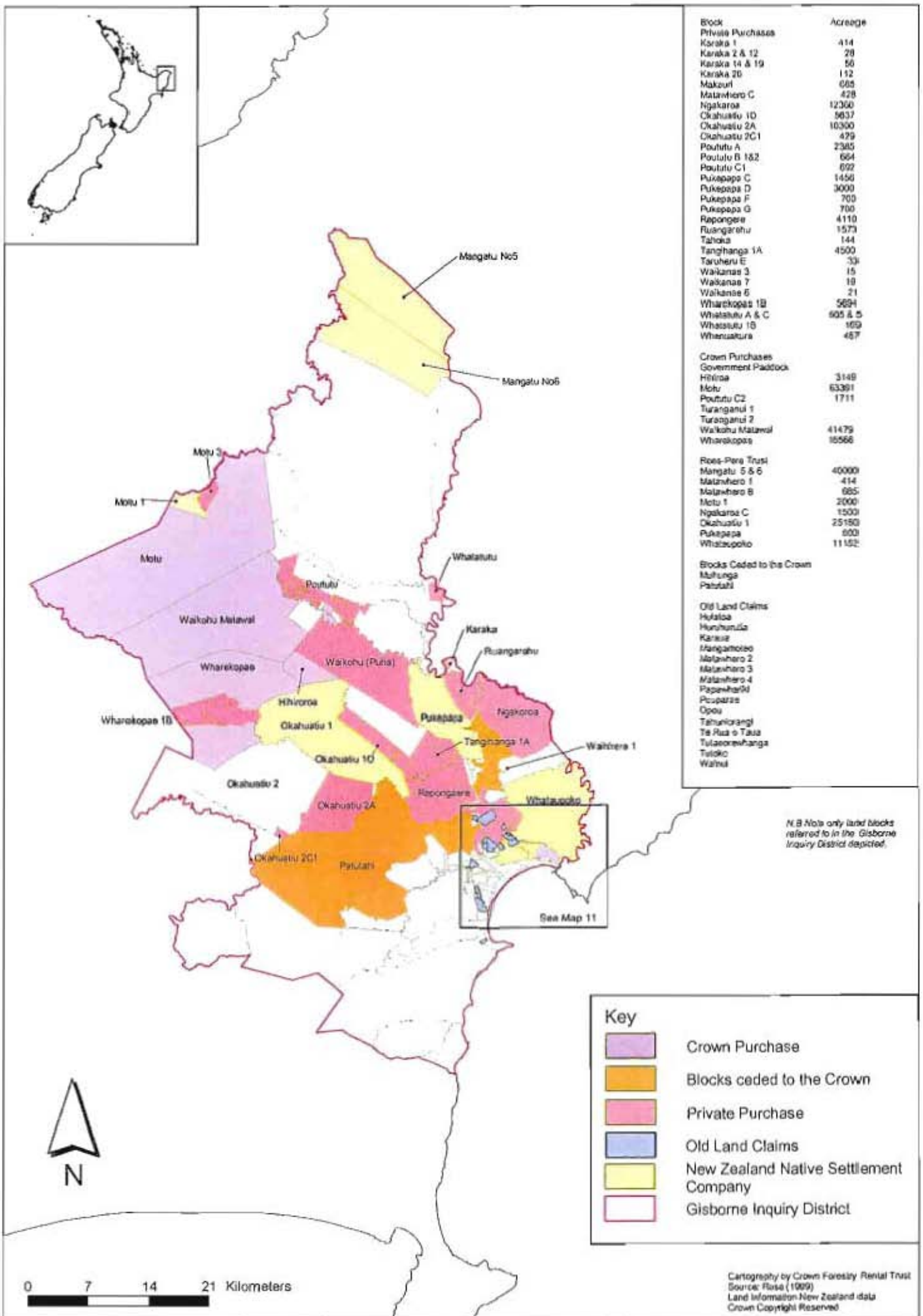


Map 8 New Zealand Native Land Settlement Company's holdings of Te Aitanga a Mahaki Lands 1886





Map 9 Poututu Divisions

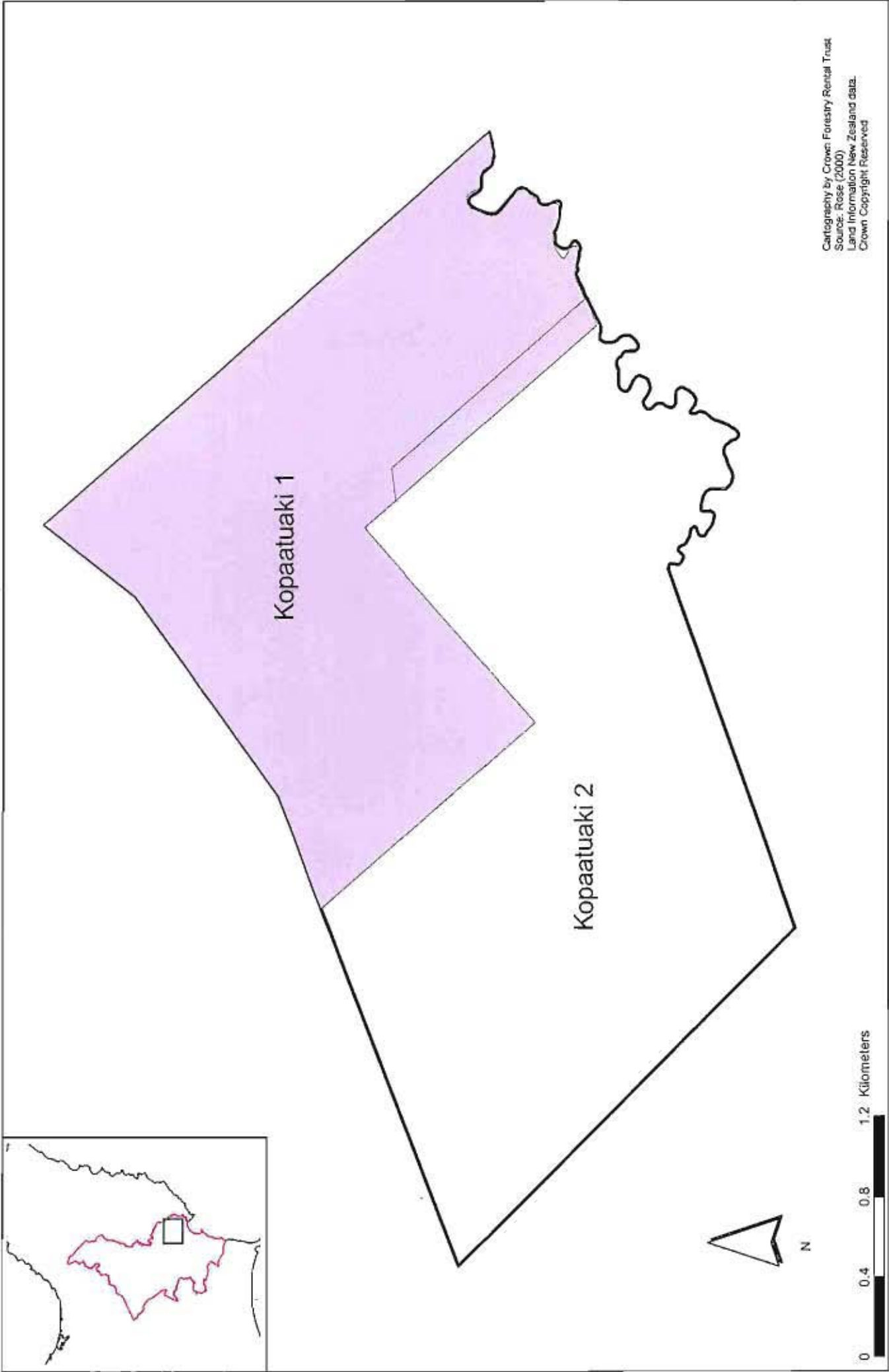


Map 10 Land Alienated to 1890

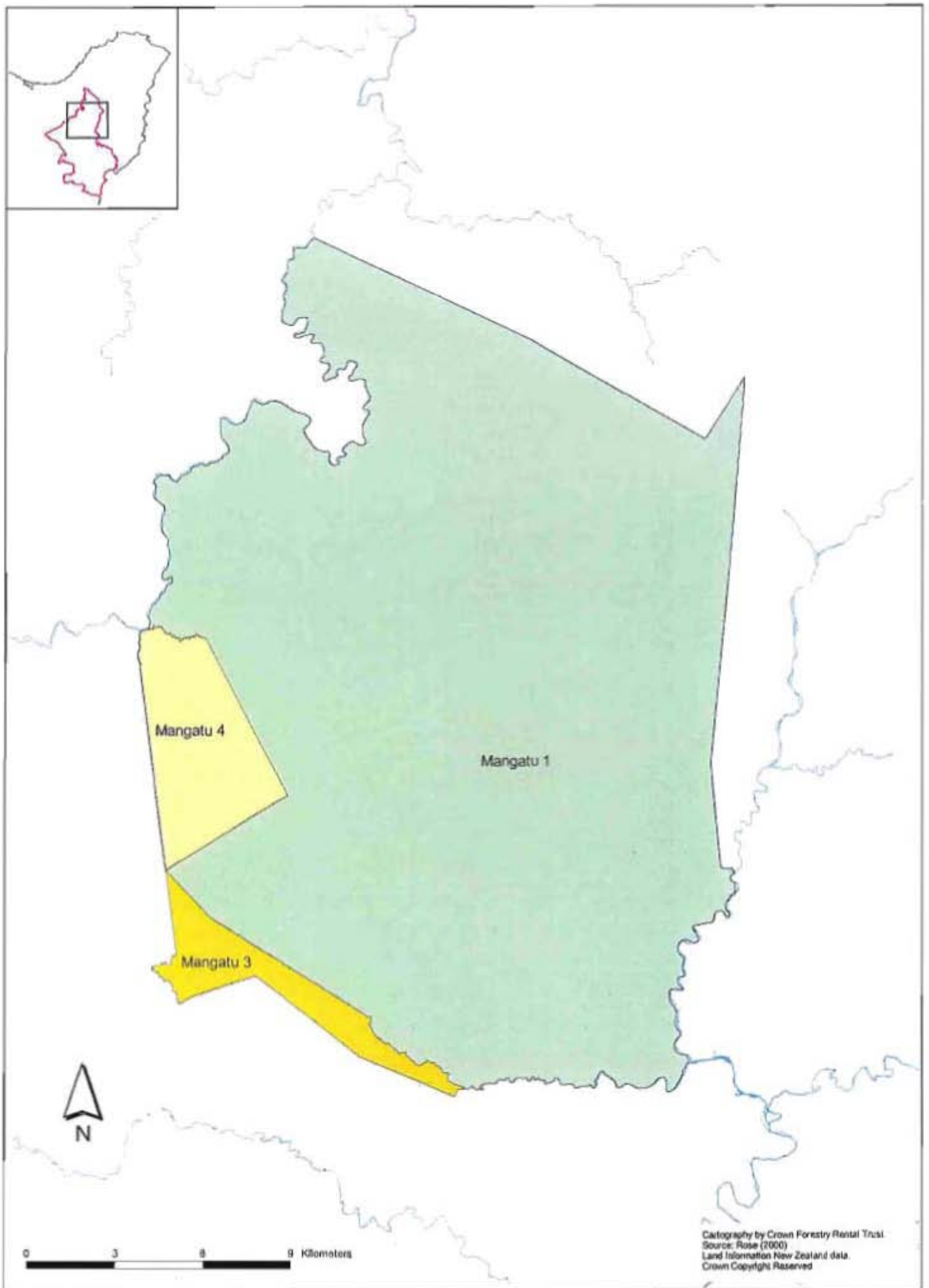


Report 2 Alienation and Effects at Development 1890-1970

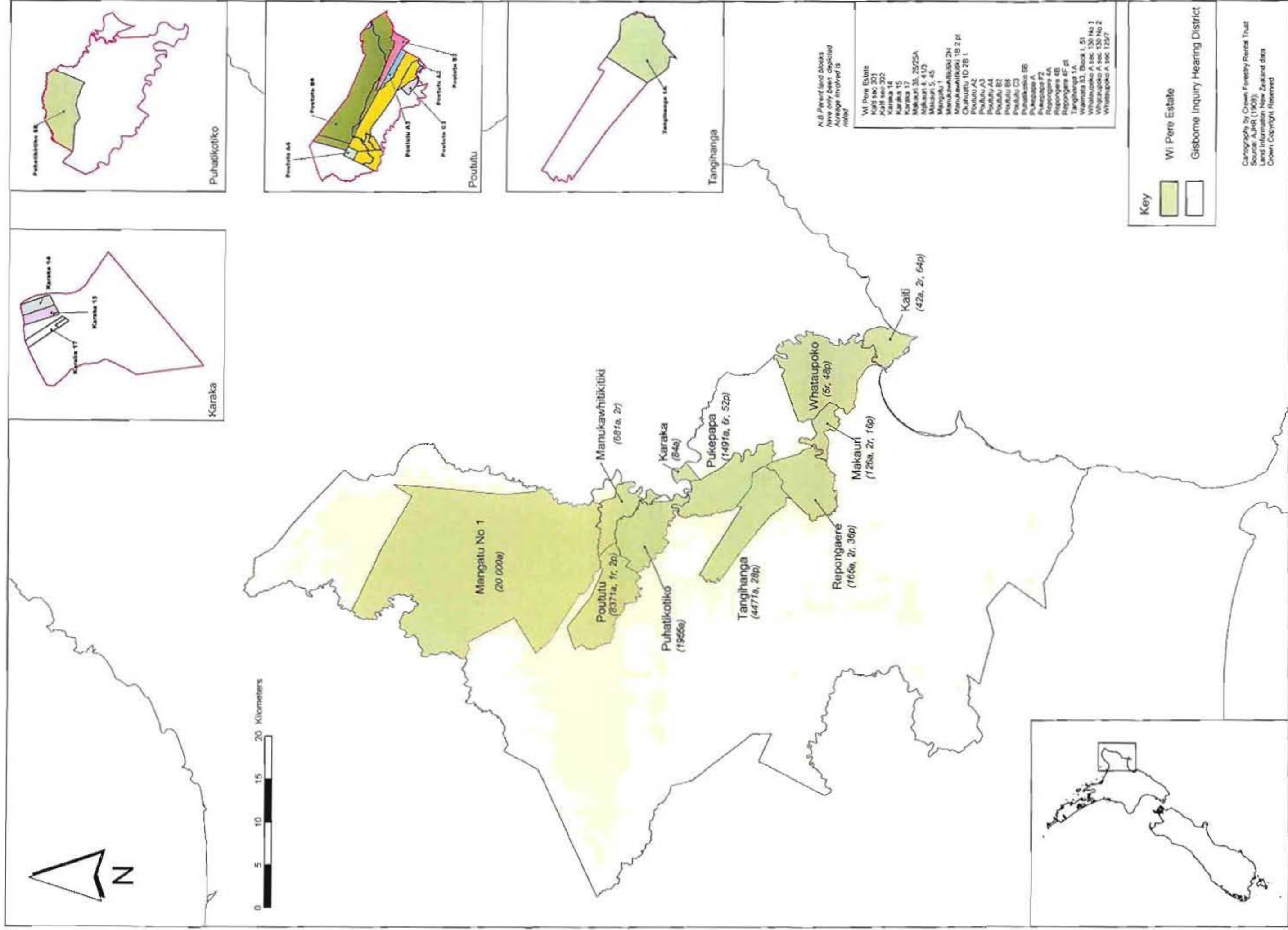
- 1. Kopaatuaki Block division**
- 2. Mangatu Incorporation Lands at 1900**
- 3. Wi Pere Trust Estate 1908**
- 4. Incorporations Formed 1902-April 1913**
- 5. Incorporations at 1932**
- 6. Incorporations at 1954**
- 7. Incorporations at 1970**
- 8. Gisborne -East Coast Region Land Utilisation Survey 1961-62 Land Tenure Sheet 2**
- 9. Gisborne -East Coast Region Land Utilisation Survey 1961-62 Land Tenure Sheet 3**

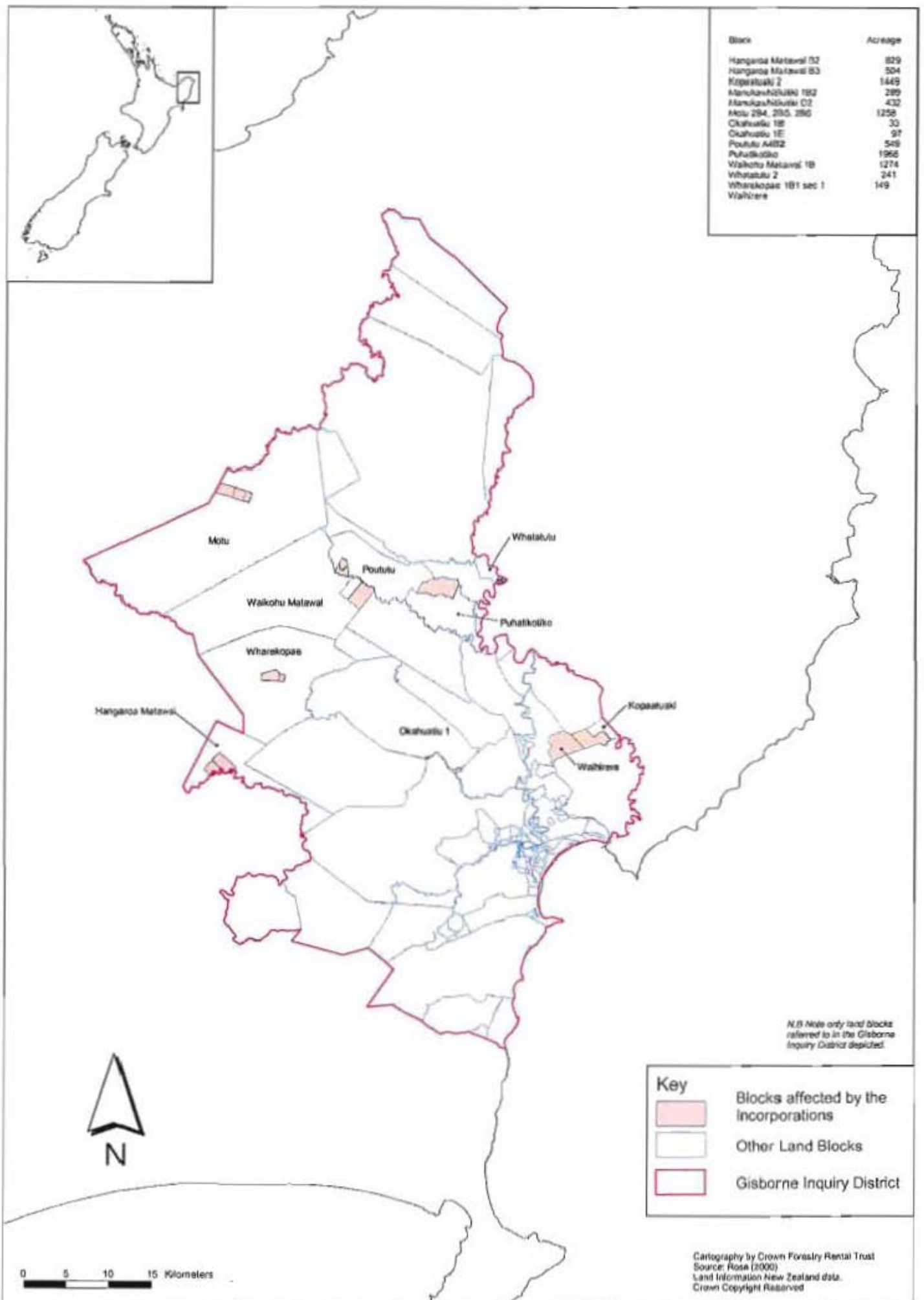


Map 1 Kopaatuaki Block Division

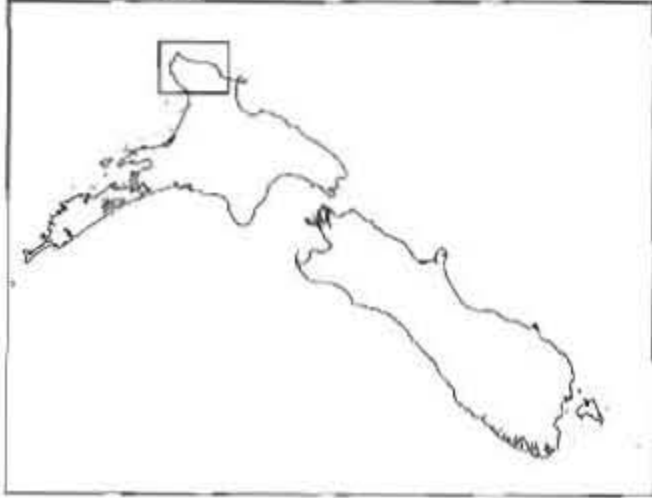


Map 2 Mangatu Incorporation Lands at 1900





Map 4 Incorporations Formed 1902- April 1913



Blocks in which interests were acquired

Ahoiti (1A2A, 1A2B, 1A2C, 1A2C3A, 1F1, 1F2, 1F4, 1F4A, 1F4C, 1F4D, 1F4E, 1F5, 1G0A, 1G3, 1J1, 1J2, 1ZB), A1, A2, A27, B1B0
 Hingaroa Matawai (B1, B2, B2C)
 Karaka (3, 4A, 5)
 Manukawhātikiri (1A2, B, C, 2C, 2D1, 2D2, 2D3, 2E, 2F, 2F2, 2F3, 2G, B1, D2F)
 Mōhio (D51, 2001)
 Ōkahuatū (1A1, 1D3B2, 1D3B4A1, 20, 207B5B9)
 Poututu (A4B2, B3)
 Pūnākotiro (1B2B3, 2A, 5B3B1, 5B3B3C, 5B3B3C, 8B2)
 Raukapō (E1, E2)
 Repongaia (A42, A42C)
 Ruangāroa (H1)
 Tāhūhū (D, 1)
 Tāhūhū (D, 1)
 Tōreohau (3, 6, 11, 12C, 17, 18A, 18B, 20)
 Wākāriari (1B, 1B1, 1B3, 2B, 2B1, 2B3C, 2C, 5, E2)
 Wāhāroa Matawai (1B)
 Wāhāroa (3D, A1, A2, A2B, A2C, A3, B1, B2, C1)
 Wāhū (1A, 1B, 1B3, 1C3, 2A2, 2B1, 2B2, 2C, 2D, 2D2)
 Whānakepa (1B1, 1B3, 2B2)
 Whānakepa (2F, 3B2A)

Leases approved by the Board

Ahoiti (A2A, 1A1, 1A3, 1F2, 1F4C, 1J1, 1J)
 Hingaroa Matawai (B4)
 Karaka (2, 6, 7B)
 Manukawhātikiri (1A2, 2F1, D2B)
 Ōkahuatū (1A2, 1A2B, 2D)
 Pūnākotiro (1B2B2, 1B2B3, 2A4, 2B3A)
 Repongaia (2H3, 4H3)
 Tōreohau (2A, 6, 11, 15, 16, 19A, 24)
 Wākāriari (1B)
 Wāhū (1D4, 2D3)
 Whānakepa (2)
 Whānakepa (57B)

N.S. Note only land blocks referred to in the Gisborne Inquiry District reported.

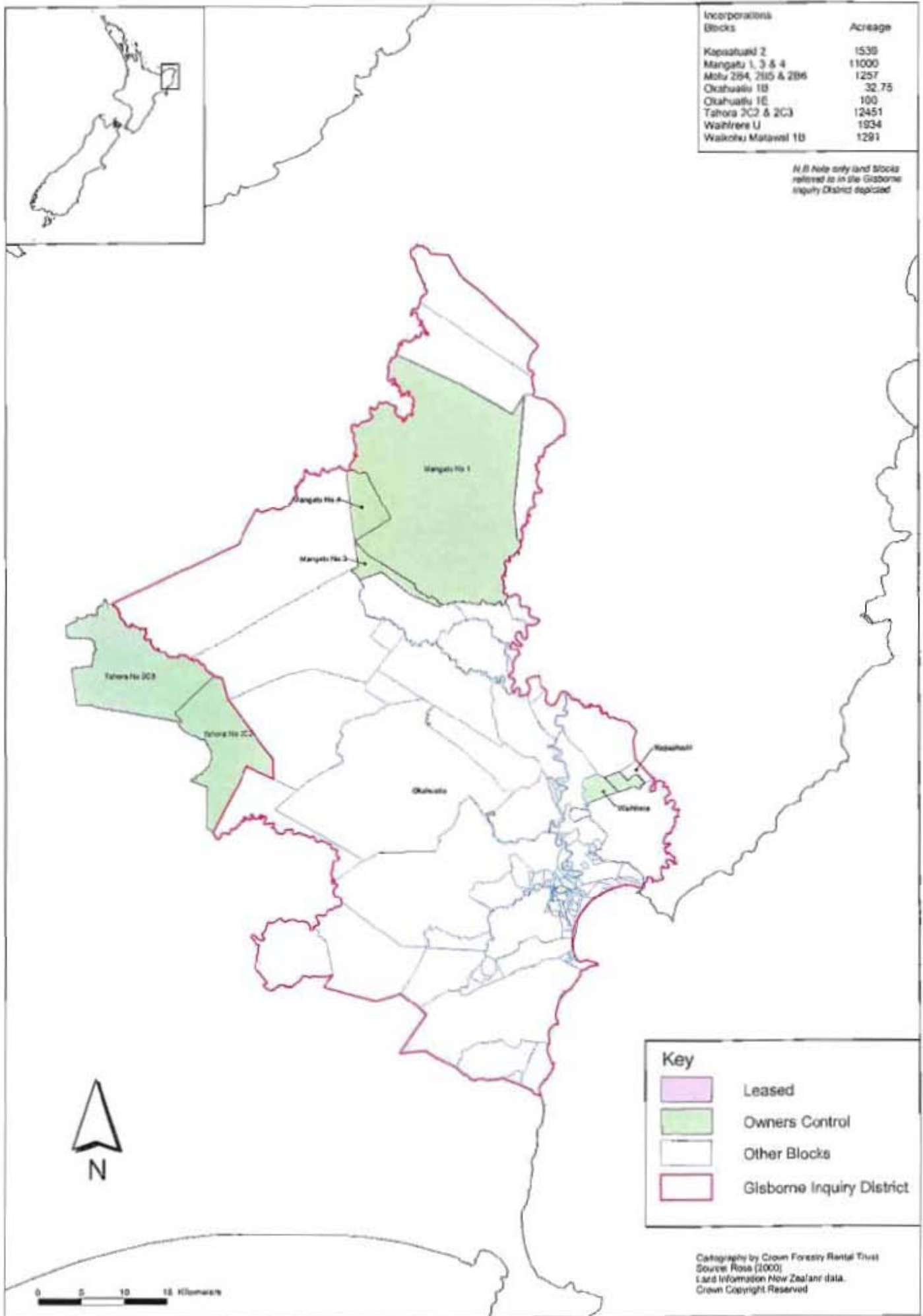
Key

- Blocks in which interests were acquired
- Leases approved by the Board
- Other Land Blocks
- Gisborne Inquiry District



Cartography by Crown Forestry Rental Trust
 Source: Itoke (2000)
 Land Information New Zealand data.
 Crown Copyright Reserved

Map 5 Incorporations at 1932

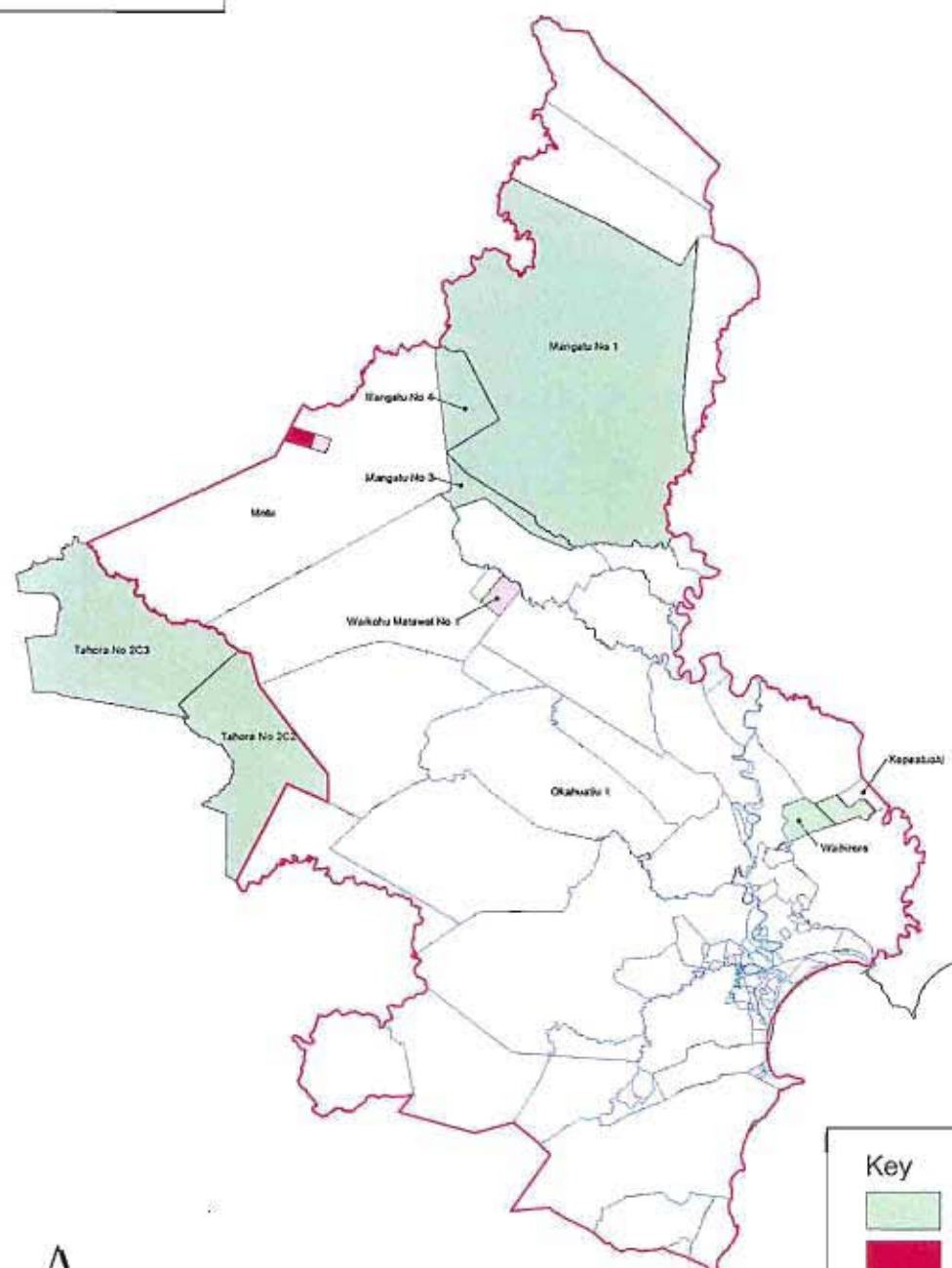


Map 6 Incorporations at 1954



Incorporations Blocks	Acreage
Kopaatuaki 2	1539
Mangatu 1, 3 & 4	11000
Motu 2B4, 2B5 & 2B6	1257
Okahuatū 1B	32.75
Okahuatū 1E	100
Tahora 2C2 & 2C3	12451
Wahiroa U	1934
Waikohu Matawai 1B	1291

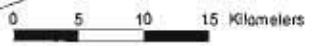
N.B Note only land blocks referred to in the Gisborne Inquiry District depicted.



Key

- Owners Control
- Sold
- Wound up
- Other Blocks
- Gisborne Inquiry District

Cartography by Crown Forestry Rental Trust
 Source: Rose (2000)
 Land Information New Zealand data.
 Crown Copyright Reserved



Map 7 Incorporations at 1970

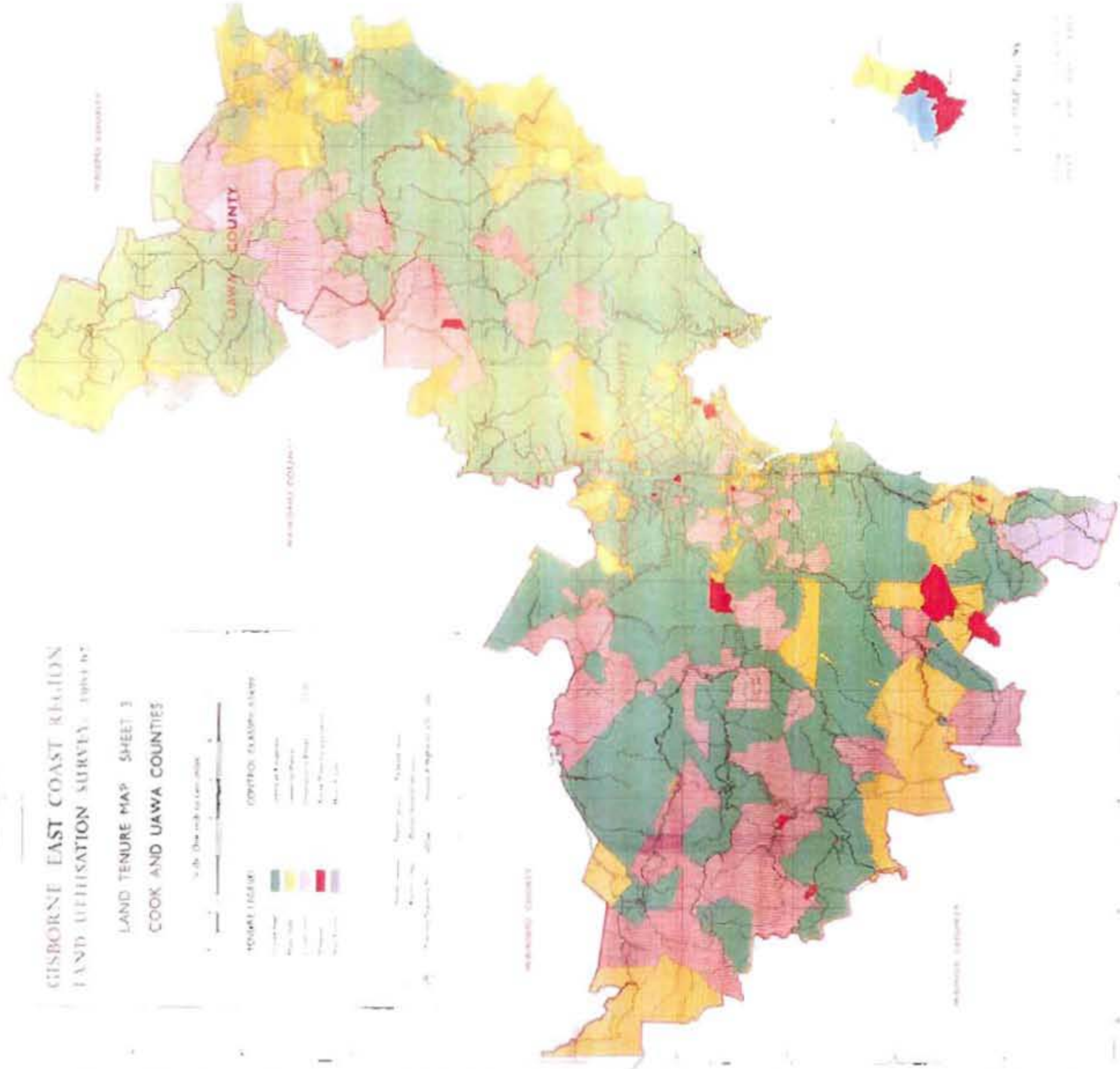
GISBORNE EAST COAST REGION
LAND UTILISATION SURVEY 1961-62

LAND TENURE MAP SHEET 3
COOK AND UAWA COUNTIES

Scale: One inch to one mile

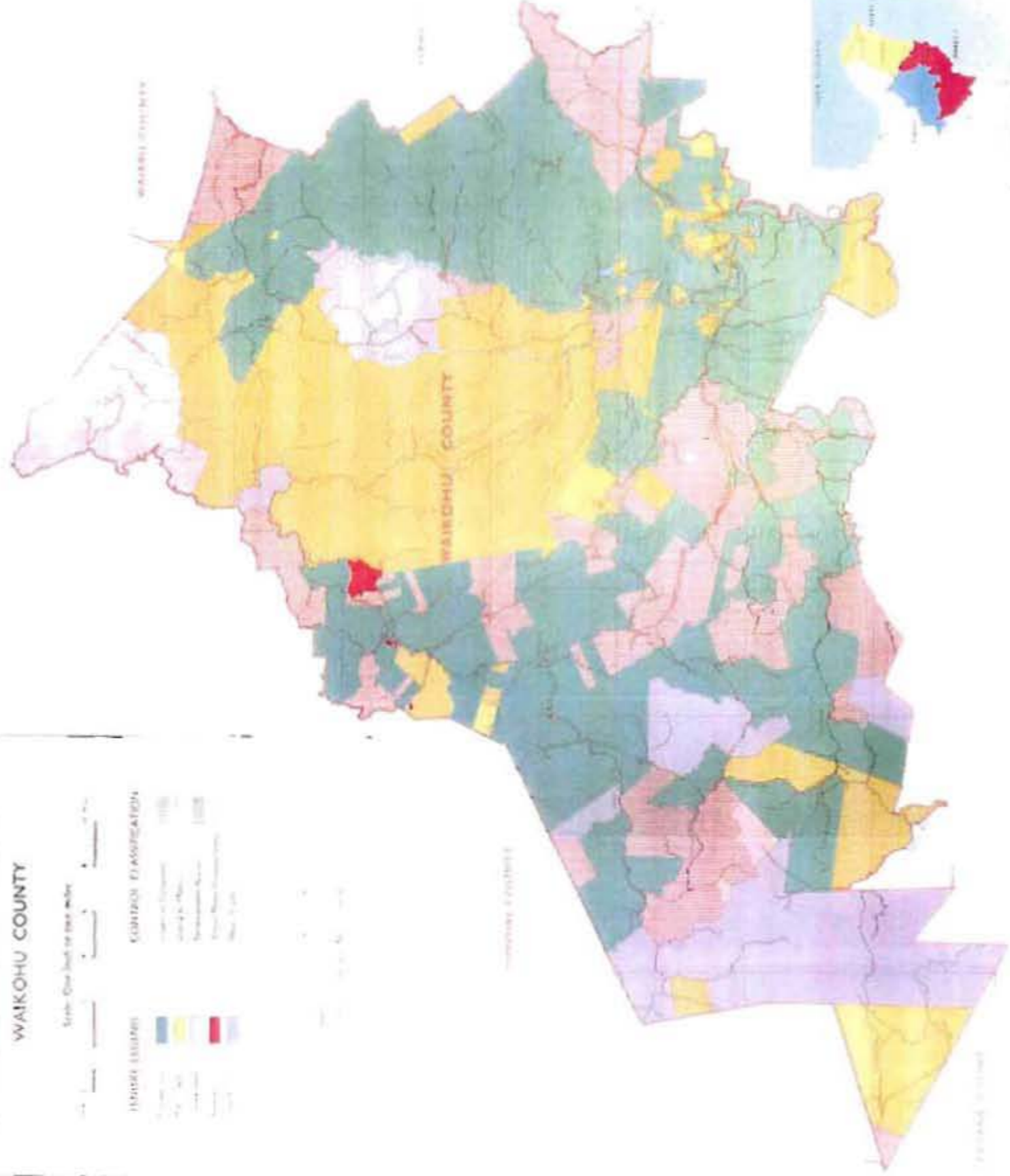
LAND TENURE	
Green	State Land
Yellow	Private Land
Red	Reserve Land
Purple	Other Land

CONTROL FEATURES	
Black line	Boundary
Black line with dots	Section Boundary
Black line with dashes	Water Boundary
Black line with triangles	Water Boundary
Black line with squares	Water Boundary
Black line with circles	Water Boundary



GISBORNE EAST COAST REGION
LAND UTILISATION SURVEY 1961-62

LAND TENURE MAP SHEET 2
WAIKOHU COUNTY



L. P. MAP No. 36
 JOHN McLELLIN 1961
 1:250,000 Scale