

R. OHAKUNE
271

Wai 1130, 1.1.2

OFFICIAL

CLAIM TO THE WAITANGI TRIBUNAL

RECEIVED
12 OCT 1987
by *[Signature]*

RECEIVED
Tribunals Division
- 9 OCT 1987
Dept. of Justice
Wellington

To: The Registrar
Waitangi Tribunal
Tribunals Division
Justice Department
Private Bag
Postal Centre
WELLINGTON

Tena koe

- 1 I *Taitoko Teauri*.....
140. B. B. St. Ohakune..... TAMAUPOKO
M. H. Smith.....
15. WARD ST. RAETIHI..... TAMAUPOKO
Robin Peahi.....
Rd Karori R.D. 1 Ohakune..... TAMAUPOKO
.....
Leitta Murphy - Peahi..... TAMAUPOKO
"Maituki" Karori R.D. 1 Ohakune.....
James Richard Akapita..... TAMAUPOKO
38 Burns Street Ohakune.....
Kotiro Karoro Karikura..... TAMAUPOKO
Old Hospital Rd Ohakune.....
TEAROA ANN KUKU WAIATA H. W. Tai..... TAMAUPOKO
7 Tokohi Rd Normandale.....

FOR ourselves the TAMAUPOKO iwi of which we are members,

CLAIM to be prejudicially affected by the fact of the block of land designated as Crown Land - in the name of WAIMARINO PT 1 as marked on the attached (three) maps,

- (a) Having been taken for Railway purposes during the 19th century and
- (b) Having been in addition to Railway use, partially disposed of as to form part of the TONGARIRO NATIONAL PARK and
- (c) Having been in addition to Railway use, partially disposed of for Justice Department use, and that latter use having come to an end that portion upon which is situated the Waikune prison, is to be sold by Landcorp, a government corporation.

7

AND CLAIM that having regard to the reason for which the land was originally acquired by the Crown, the amount was grossly excessive, and the subsequent uses and dispositions are inconsistent with the principles of the Treaty of Waitangi.

THE TRIBUNAL is asked to recommend as follows,

- (a) That all land as contained in the original Waimarino block, over and beyond that which in the opinion of the TRIBUNAL fulfils the reasonable requirement of a railway, be returned to the TAMAUPOKO iwi,
- (b) That any revenue that has since derived as a consequence of the use or disposal of the land for other than Railway purposes, be assessed and reparation made to the TAMAUPOKO iwi
- (c) That the Crown make any other reparation or pay such compensation as the TRIBUNAL considers reasonable.

THE TRIBUNAL is asked to commission a researcher to report on this claim before any hearing

THE TRIBUNAL is asked to appoint a lawyer to assist us in the preparation of our case and to assist us at the hearing.

THE TRIBUNAL is asked to hear the claim at MAUNGARONGO MARAE, Ohakune.

PERSONS affected by this claim and who should have notice of it are

- (a) The Railways Corporation
- (b) The Department of Conservation .
- (c) The Justice Department
- (e) The Landcorp

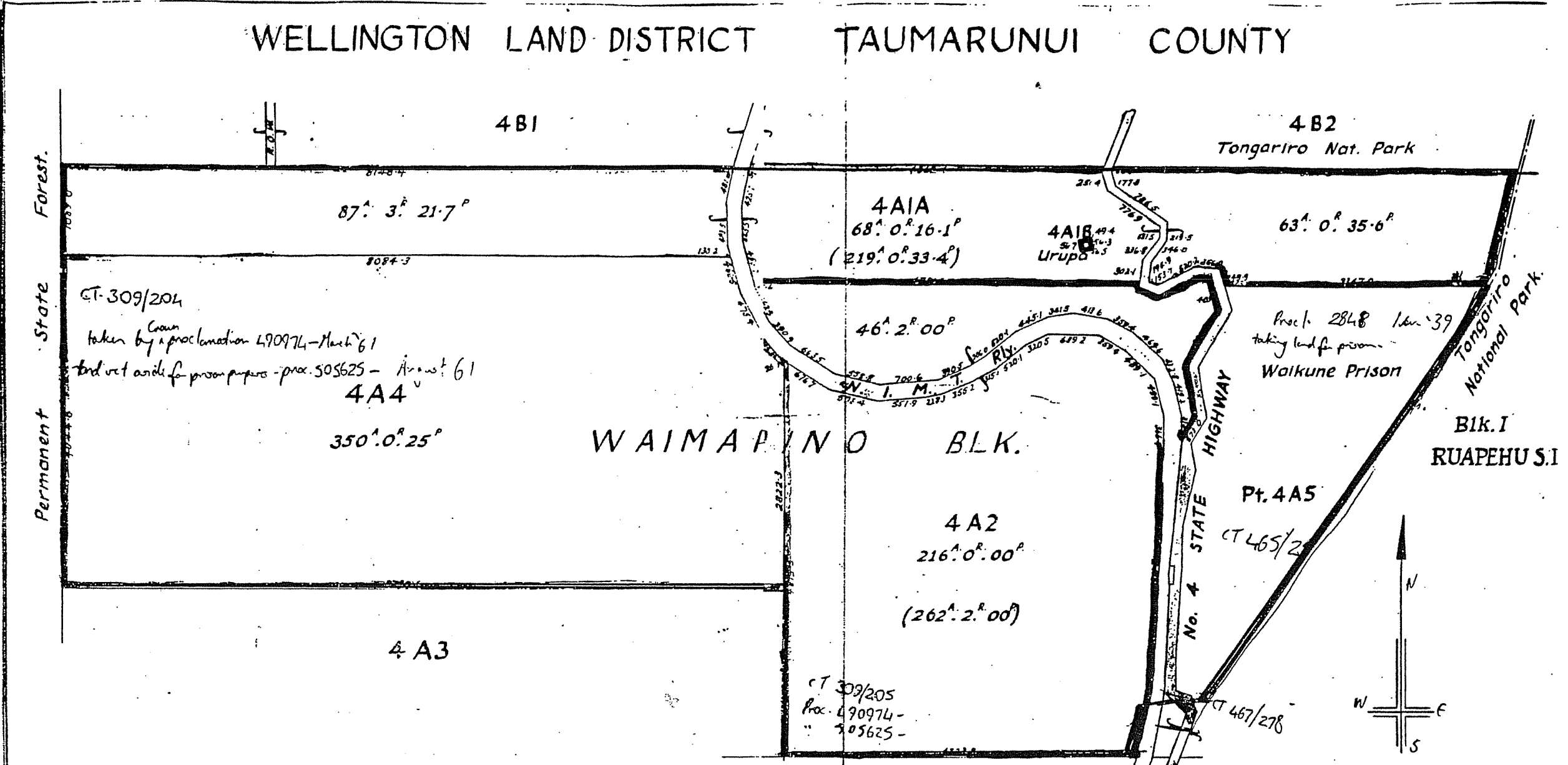
NOTICES to the claimant should be sent to Te Aroha Ann WAITAI of 7 Pokohiwi Road, Normandale, Lower Hutt.

DATE

SIGNATURES

Te Aroha Ann Waitai
.....
James Richard Whapeta
.....
Robin Peeki
.....
Le Uta Muriwai Peeki
.....

WELLINGTON LAND DISTRICT TAUMARUNUI COUNTY



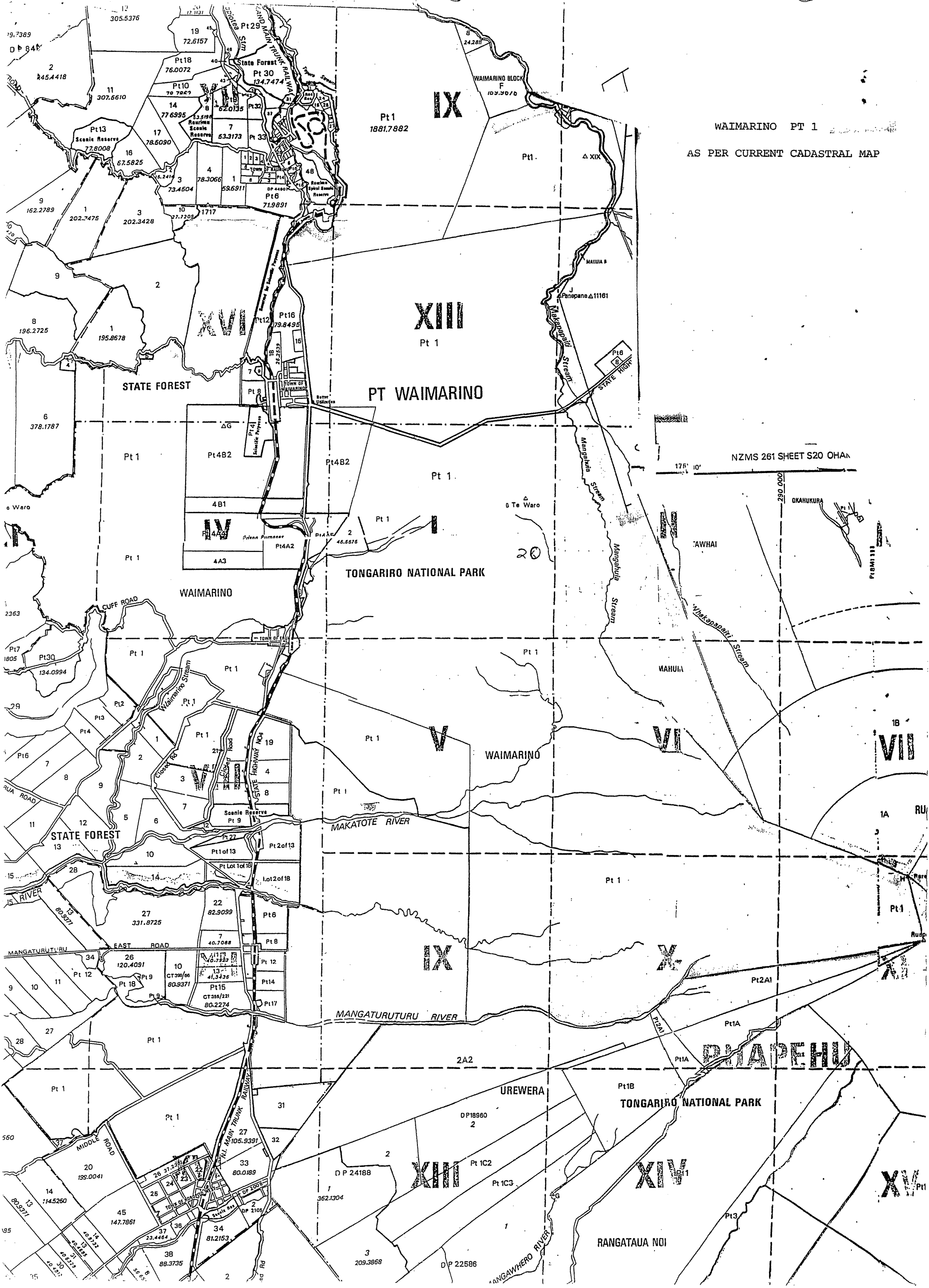
Total Area: 831° 3' 18.4"

Plan of
 WAIMARINO, 4A1A, 4A2 & 4A4
 Blk IV, Manganui S.D.
 Scale: 10 chains to an inch

R.G.

M.L. 2336 L
 M.L. 4779.

Certified Correct
A. Gardner
 10/2/61 Chief Surveyor



WAIMARINO PT 1
AS PER CURRENT CADASTRAL MAP

NZMS 261 SHEET S20 OHAN

175° 10'

290 000

OKAHUKURA

TAWHAI

MAHUIA

VII

1A RU

Pt 1

Rudg

MAPEHU

TONGARIRO NATIONAL PARK

RANGATAUA NOI

IX

XIII

PT WAIMARINO

Pt 1

Pt 1

V

WAIMARINO

IX

X

XIII

XIV

XV

Pt 1
1881.7882

Pt 1

Pt 1

Pt 1

Pt 1

Pt 1

Pt 1

Pt 1

Pt 1

Pt 1

Pt 1

Pt 1

Pt 18
76.0072

Pt 10
70.7067

Pt 14
77.6995

Pt 17
78.6090

Pt 16
79.8495

Pt 8
71.9891

Pt 12
79.8495

Pt 15
80.2274

Pt 17
80.9371

Pt 19
82.9099

Pt 26
120.4091

Pt 33
80.0189

Pt 34
81.2153

Pt 37
23.4484

Pt 38
88.3735

Pt 40
72.6157

Pt 41
41.3425

Pt 42
40.7088

Pt 43
331.8725

Pt 44
46.5675

Pt 45
40.7088

Pt 46
40.7088

Pt 47
40.7088

Pt 48
40.7088

Pt 49
40.7088

Pt 50
40.7088

Pt 51
40.7088

Pt 52
40.7088

Pt 53
40.7088

Pt 54
40.7088

Pt 55
40.7088

Pt 56
40.7088

Pt 57
40.7088

Pt 58
40.7088

Pt 59
40.7088

Pt 60
40.7088

Pt 61
40.7088

Pt 62
40.7088

Pt 63
40.7088

Pt 64
40.7088

Pt 65
40.7088

Pt 66
40.7088

Pt 67
40.7088

Pt 68
40.7088

Pt 69
40.7088

Pt 70
40.7088

Pt 71
40.7088

Pt 72
40.7088

Pt 73
40.7088

Pt 74
40.7088

Pt 75
40.7088

Pt 76
40.7088

Pt 77
40.7088

Pt 78
40.7088

Pt 79
40.7088

Pt 80
40.7088

Pt 81
40.7088

Pt 82
40.7088

Pt 83
40.7088

Pt 84
40.7088

Pt 19
72.6157

Pt 20
73.4504

Pt 21
73.4504

Pt 22
73.4504

Pt 23
73.4504

Pt 24
73.4504

Pt 25
73.4504

Pt 26
73.4504

Pt 27
73.4504

Pt 28
73.4504

Pt 29
73.4504

Pt 30
73.4504

Pt 31
73.4504

Pt 32
73.4504

Pt 33
73.4504

Pt 34
73.4504

Pt 35
73.4504

Pt 36
73.4504

Pt 37
73.4504

Pt 38
73.4504

Pt 39
73.4504

Pt 40
73.4504

Pt 41
73.4504

Pt 42
73.4504

Pt 43
73.4504

Pt 44
73.4504

Pt 45
73.4504

Pt 46
73.4504

Pt 47
73.4504

Pt 48
73.4504

Pt 49
73.4504

Pt 50
73.4504

Pt 51
73.4504

Pt 52
73.4504

Pt 53
73.4504

Pt 54
73.4504

Pt 55
73.4504

Pt 56
73.4504

Pt 57
73.4504

Pt 58
73.4504

Pt 59
73.4504

Pt 60
73.4504

Pt 61
73.4504

Pt 62
73.4504

Pt 63
73.4504

Pt 64
73.4504

Pt 65
73.4504

Pt 66
73.4504

Pt 67
73.4504

Pt 68
73.4504

Pt 69
73.4504

Pt 70
73.4504

Pt 71
73.4504

Pt 72
73.4504

Pt 73
73.4504

Pt 74
73.4504

Pt 75
73.4504

Pt 76
73.4504

Pt 77
73.4504

Pt 78
73.4504

Pt 11
307.6610

Pt 12
307.6610

Pt 13
77.8008

Pt 14
77.8008

Pt 15
67.5825

Pt 16
67.5825

Pt 17
67.5825

Pt 18
67.5825

Pt 19
67.5825

Pt 20
67.5825

Pt 21
67.5825

Pt 22
67.5825

Pt 23
67.5825

Pt 24
67.5825

Pt 25
67.5825

Pt 26
67.5825

Pt 27
67.5825

Pt 28
67.5825

Pt 29
67.5825

Pt 30
67.5825

Pt 31
67.5825

Pt 32
67.5825

Pt 33
67.5825

Pt 34
67.5825

Pt 35
67.5825

Pt 36
67.5825

Pt 37
67.5825

Pt 38
67.5825

Pt 39
67.5825

Pt 40
67.5825

Pt 41
67.5825

Pt 42
67.5825

Pt 43
67.5825

Pt 44
67.5825

Pt 45
67.5825

Pt 46
67.5825

Pt 47
67.5825

Pt 48
67.5825

Pt 49
67.5825

Pt 50
67.5825

Pt 51
67.5825

Pt 52
67.5825

Pt 53
67.5825

Pt 54
67.5825

Pt 55
67.5825

Pt 56
67.5825

Pt 57
67.5825

Pt 58
67.5825

Pt 59
67.5825

Pt 60
67.5825

Pt 61
67.5825

Pt 62
67.5825

Pt 63
67.5825

Pt 64
67.5825

Pt 65
67.5825

Pt 66
67.5825

Pt 67
67.5825

Pt 68
67.5825

Pt 69
67.5825

Pt 70
67.5825

Pt 2
445.4418

Pt 3
202.3428

Pt 4
202.3428

Pt 5
202.3428

Pt 6
202.3428

Pt 7
202.3428

Pt 8
202.3428

Pt 9
202.3428

Pt 10
202.3428

Pt 11
202.3428

Pt 12
202.3428

Pt 13
202.3428

Pt 14
202.3428

Pt 15
202.3428

Pt 16
202.3428

Pt 17
202.3428

Pt 18
202.3428

Pt 19
202.3428

Pt 20
202.3428

Pt 21
202.3428

Pt 22
202.3428

Pt 23
202.3428

Pt 24
202.3428

Pt 25
202.3428

Pt 26
202.3428

Pt 27
202.3428

Pt 28
202.3428

Pt 29
202.3428

Pt 30
202.3428

Pt 31
202.3428

Pt 32
202.3428

Pt 33
202.3428

Pt 34
202.3428

Pt 35
202.3428

Pt 36
202.3428

Pt 37
202.3428

Pt 38
202.3428

Pt 39
202.3428

Pt 40
202.3428

Pt 41
202.3428

Pt 42
202.3428

Pt 43
202.3428

Pt 44
202.3428

Pt 45
202.3428

Pt 46
202.3428

Pt 47
202.3428

Pt 48
202.3428

Pt 49

